

>> RP- IP2105

4-P Broadband Router

RP-IP2105 4-P Broadband Router provides you an easy and stable way to share your Cable/DSL high speed Internet connection. The built-in NAT technology can act as a firewall to protect your internal network against outside hackers.

The Router is compatible with most popular operating systems, such as Windows, Linux, Macintosh, etc.



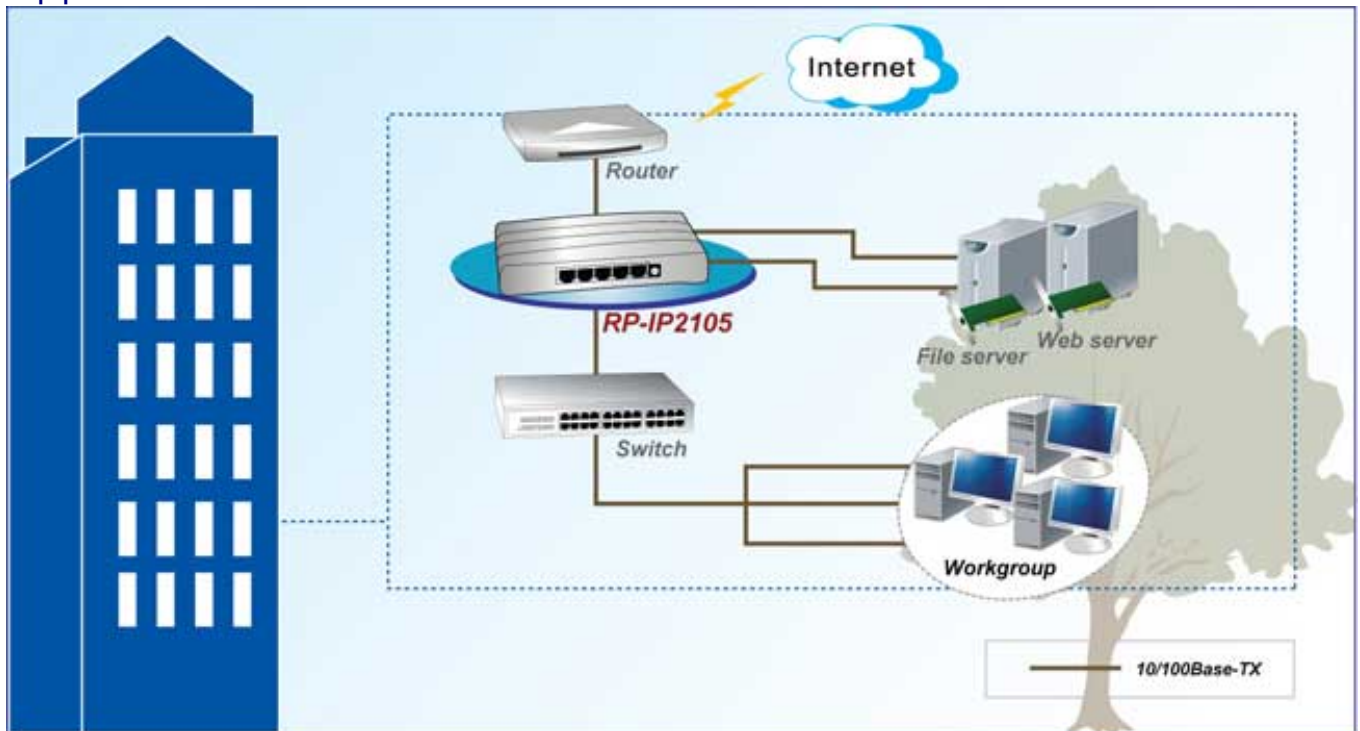
Feature

- Integrate with 4 ports Fast Ethernet switch: 10/100Mbps MDI/MDIX auto-sensing
- Provide 1*10/100Mbps WAN interface to connect with DSL or cable modem for broadband Internet access
- Support different Internet connecting modes: PPPoE, DHCP Client and Static IP PPTP
- Built-in NAT (Network Address Transfer) technology acts as a firewall to protect internal sources against outside hackers
- Support UPnP, Windows XP can find the Router in the network automatically
- Simple, intelligent, web-based management and configuration interface
- Support DHCP server to retrieve TCP/IP settings automatically from the Router
- Support virtual server which makes LAN services (such as FTP, WWW, TELNET, DNS, etc) to be accessible to the Internet users

Specification

Standards	<ul style="list-style-type: none"> • IEEE802.3 10Base-T, IEEE802.3u 100Base-TX
Interface	<ul style="list-style-type: none"> • 4-P * LAN, 1-P * WAN
Management	<ul style="list-style-type: none"> • Web-based
WAN Type	<ul style="list-style-type: none"> • Static IP Address • Dynamic IP Address (DHCP Client) • PPPoE • PPTP
Connection Scheme	<ul style="list-style-type: none"> • Connect on Demand/Auto-Disconnect • Manually Connect/Disconnect • Auto Reconnect
NAT Function	<ul style="list-style-type: none"> • One-to-Many NAT • One-to-One NAT • Virtual Server • DMZ Host
Access Control	<ul style="list-style-type: none"> • MAC-level Access Control • Domain Access Control
Event Logging	<ul style="list-style-type: none"> • On-web logging • Syslog supported
LED Indicators	<ul style="list-style-type: none"> • System, Link/Activity
Power Supply	<ul style="list-style-type: none"> • External power Adapter DC9V, 500mA
Environment	<ul style="list-style-type: none"> • Operating Temperature: 0°C~ 50°C • Operating Humidity: 20%~95% (Non-Condensing)
Dimension	<ul style="list-style-type: none"> • 160 * 83 * 26 mm
Certifications	<ul style="list-style-type: none"> • FCC, CE

Application



Ordering information

RP-IP2105 4-P Broadband Router