

>> RP-IP509

4-P Broadband Router

RP-IP509 4-P Broadband Router provides one 10/100Mbps WAN interface to connect with DSL/ Cable Modem/ broadband internet access.

Being integrated with 4 ports Fast Ethernet switch and MDI/MDIX auto-sensing is supported on each port,

RP-IP509 enables users to connect with four PCs, access points, or printers easily. The built-in NAT function can act as a firewall to protect your internal network against outside hackers.

Moreover, this router also supports web-based management for users to know its configuration and to upgrade new firmware simply.



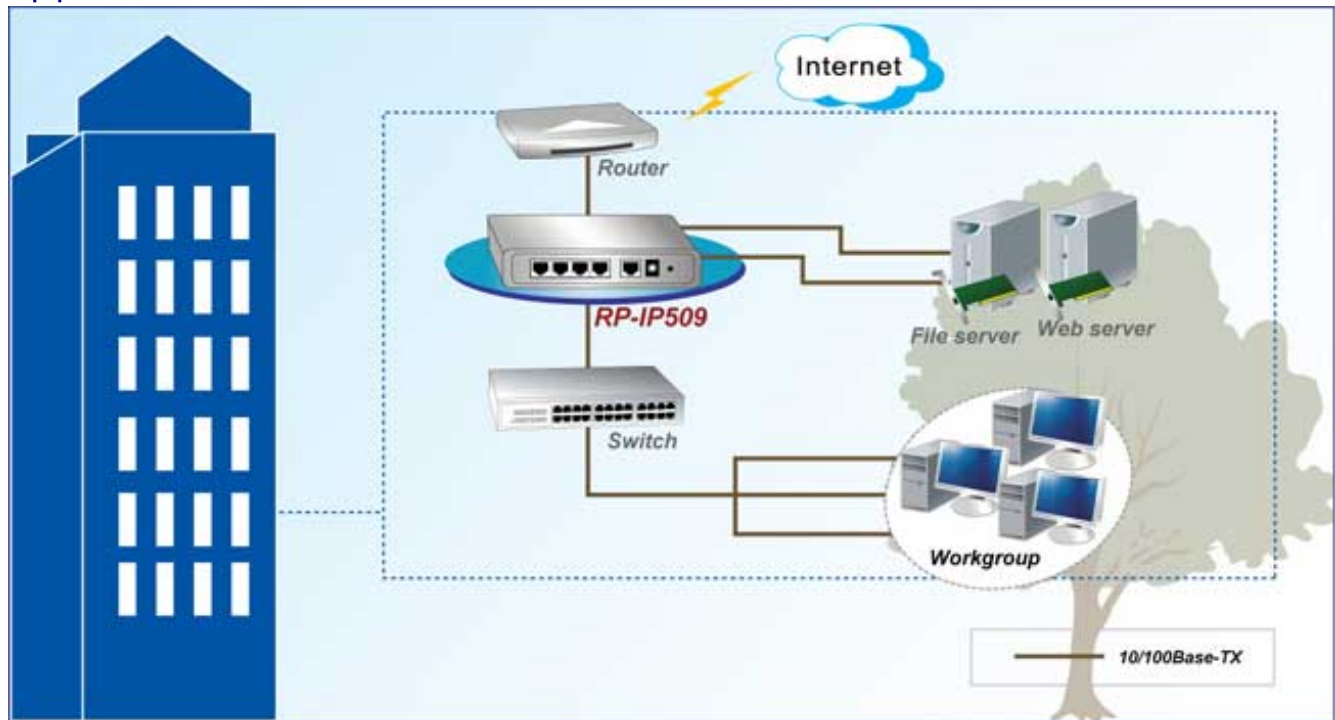
Feature

- Integrates with 4 ports Fast Ethernet switch: 10/100Mbps MDI/MDIX auto-sensing
- Provides 10/100Mbps WAN interface to connect with DSL or cable modem for broadband Internet access
- Built-in NAT function: Allows multiple PCs and devices to share one Internet connection
- Browser-based interface configuration and management: OS independent, easy-to-use for consumer installation
- Built-in firewall to protect your Intranet
- Supports PPTP, L2TP
- Easy to upgrade: using Web or Windows Application to upgrade new version of firmware

Specification

ADSL Features	<ul style="list-style-type: none">• IEEE 802.3 10Base-T Ethernet• IEEE 802.3u 100Base-TX Fast Ethernet
Interface	<ul style="list-style-type: none">• 4-P * LAN, 1-P * WAN
Memory	<ul style="list-style-type: none">• Flash 512KB, DRAM 2MB
Firmware Platform	<ul style="list-style-type: none">• Proprietary Kernel
Management Method	<ul style="list-style-type: none">• Web-based
WAN Type	<ul style="list-style-type: none">• Static IP Address• Dynamic IP Address (DHCP Client)• PPPoE• PPTP• Dial-Up Network
Connection Scheme	<ul style="list-style-type: none">• Connect on Demand/Auto-Disconnect• Manually Connect/Disconnect• Auto Reconnect
NAT Function	<ul style="list-style-type: none">• One-to-Many NAT• One-to-One NAT• Virtual Server• Special Application• DMZ Host
Access Control	<ul style="list-style-type: none">• MAC-level Access Control• Inbound/Outbound IP Filter• Domain Access Control
Firewall	<ul style="list-style-type: none">• NAT Firewall with SPI mode• DoS Detection
Event Logging	<ul style="list-style-type: none">• On-web logging• Syslog supported
Power Supply	<ul style="list-style-type: none">• External power Adapter DC9V, 1A
Environment	<ul style="list-style-type: none">• Operating Temperature: -20°C~ 70°C• Operating Humidity: 10%~90% (Non-Condensing)
Dimension	<ul style="list-style-type: none">• 153 * 112 * 26 mm
Certifications	<ul style="list-style-type: none">• FCC, CE

Application



Ordering information

RP-IP509 4-P Broadband Router

REPOTEC CO., LTD.

3F., No.258, Liancheng Rd., Zhonghe District., New Taipei City 235, Taiwan
TEL: 886-2-8227-1888 FAX: 886-2-8227-1818