

RP-VC102C

Coaxial over VDSL2 Converter

RP-VC102C is a Cable LAN Extender providing a broadband transmission up to 100/60Mbps for downstream/upstream over coaxial cable for point-to-point Ethernet connectivity. With 100/60Mbps data rate, RP-VC102E supports transmission distance up to 300 meters and 30/10 Mbps for 1km long range connection. Users may also select a fixed data rate or a fixed SNR margin for different coaxial cable ranging.

With plug and play features and minimum installation time, a pair of RP-VC102C offers a cost effective solution for bandwidth-hungry applications such as video streaming and FTTB over single coaxial cable.



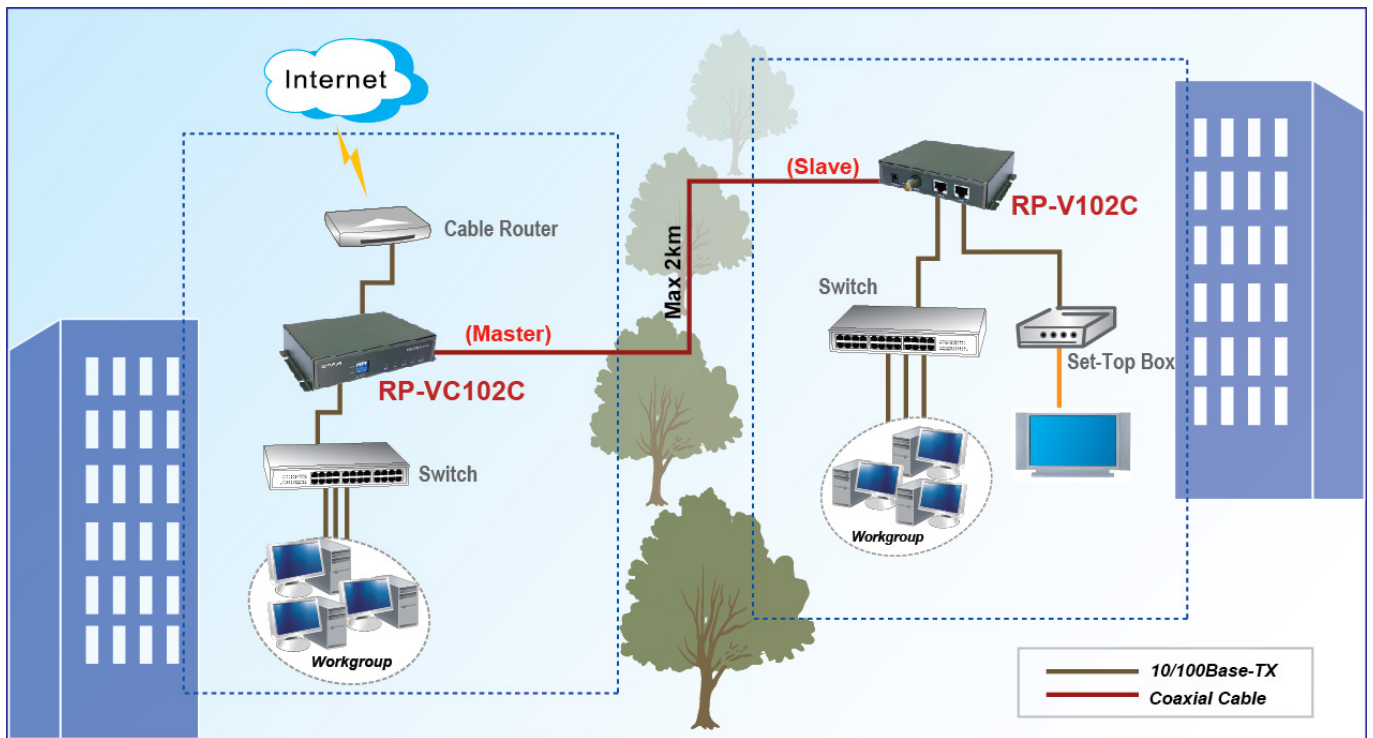
Feature

- Compliance with ITU-T G.993.1, G.993.2 VDSL/VDSL2 and SG15Q4 DMT
- 100/60Mbps Down / Up Stream for distance up to 300 meters
- Trellis Coding support up to 1024 Discrete Multi-Tone (DMT) bin
- Supports Cable connection up to 2000 meter
- Selectable Fast and Interleaved modes
- Selectable fixed data rate and fixed SNR margin
- Auto MDIX for 10/100Base-T Ethernet LAN Ports
- 4 Dip Switches for Master/Slave Configurations
- Low-Latency for Video/Voice/Data applications

Specification

Standard	<ul style="list-style-type: none"> • IEEE802.3/IEEE802.3u standard • Ethernet over VDSL2 • ITU-T G.993.1/2, SG15Q4 DMT Compliance 																																	
Interface	<ul style="list-style-type: none"> • 2 RJ-45 10/100Mbps Ethernet ports • 1 BNC Connector for Ethernet over Coaxial cable • 4 DIP switch for mode selection 																																	
Cable	<ul style="list-style-type: none"> • RJ-45 (Ethernet): Category 3, 4, 5 UTP/STP • BNC (DSL): Coaxial cable 																																	
VDSL Transmission	<ul style="list-style-type: none"> • ITU-T G.993.1/2, SG15Q4 DMT Compliance • Trellis Code with 1024 DMT bins • Max Data Rate: 100/60 Mbps 																																	
Network Features	<ul style="list-style-type: none"> • Auto-Detection for 10/100 Base-T and Half/Full duplex • High performance bridge for Ethernet extension • Fully compatible with IEEE802.3/IEEE802.3u • Auto MDIX Function 																																	
Data Rate & Distance	<ul style="list-style-type: none"> • Performance in 5C2V Cable at 6dB without rate limit <table border="1"> <thead> <tr> <th>Down Stream Data Rate (Mbps)</th> <th>Up Stream Data Rate (Mbps)</th> <th>Distance (feet)</th> </tr> </thead> <tbody> <tr><td>100</td><td>60</td><td>500</td></tr> <tr><td>100</td><td>58</td><td>1000</td></tr> <tr><td>100</td><td>56</td><td>1250</td></tr> <tr><td>98</td><td>53</td><td>1500</td></tr> <tr><td>96</td><td>50</td><td>1750</td></tr> <tr><td>88</td><td>48</td><td>2000</td></tr> <tr><td>80</td><td>44</td><td>2500</td></tr> <tr><td>75</td><td>35</td><td>3000</td></tr> <tr><td>70</td><td>30</td><td>3500</td></tr> <tr><td>63</td><td>25</td><td>4000</td></tr> </tbody> </table>	Down Stream Data Rate (Mbps)	Up Stream Data Rate (Mbps)	Distance (feet)	100	60	500	100	58	1000	100	56	1250	98	53	1500	96	50	1750	88	48	2000	80	44	2500	75	35	3000	70	30	3500	63	25	4000
Down Stream Data Rate (Mbps)	Up Stream Data Rate (Mbps)	Distance (feet)																																
100	60	500																																
100	58	1000																																
100	56	1250																																
98	53	1500																																
96	50	1750																																
88	48	2000																																
80	44	2500																																
75	35	3000																																
70	30	3500																																
63	25	4000																																
LED indicators	<ul style="list-style-type: none"> • POWER: Power is ON • BNC: Cable Loop Connection Status • LAN1/ LAN2: Data Activity of LAN Port1,2 • BNC: Cable Loop Connection Status • M/S: Master/Slave Selection 																																	
Power Supply	<ul style="list-style-type: none"> • External Power Adapter DC5V/2A 																																	
Environment	<ul style="list-style-type: none"> • Operating Temperature: 0°C~ 40°C • Operating Humidity: 10%~90% (Non-Condensing) 																																	
Dimension	<ul style="list-style-type: none"> • 120 * 90 * 28 mm 																																	
Certifications	<ul style="list-style-type: none"> • CE, FCC 																																	

Application



Ordering information

RP-VC102C Coaxial over VDSL2 Converter