



RP-VC102E

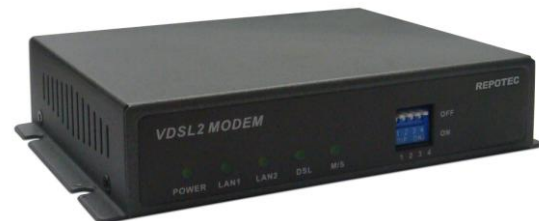
Ethernet over VDSL2 Converter

The converter supports the signal conversion between traditional Ethernet and innovative VDSL technology. The device is a right solution to integrate current Ethernet application with the new building phone line networking technology, like hotel, office and apartment environment.

The EoVDSL2 port supports symmetry and asymmetry data transmission bandwidth up to 60Mbps and with 100/60Mbps data rate, the converter supports transmission distance up to 300 meters and 30/10 Mbps for 1km long range connection. Users may also select a fixed data rate or a fixed SNR margin for different copper line ranging.

It is ideal for providing video-on-demand and multi-media service to apartment, hotel and campus without rewiring cable consideration. Moreover, the distance expansion also provides wide range coverage.

The converter is plug-n-play without the need to configure software, and it is fully compliant with all kinds of network protocols. Moreover, the rich diagnostic LEDs on the front-panel provide the operating status of the system.



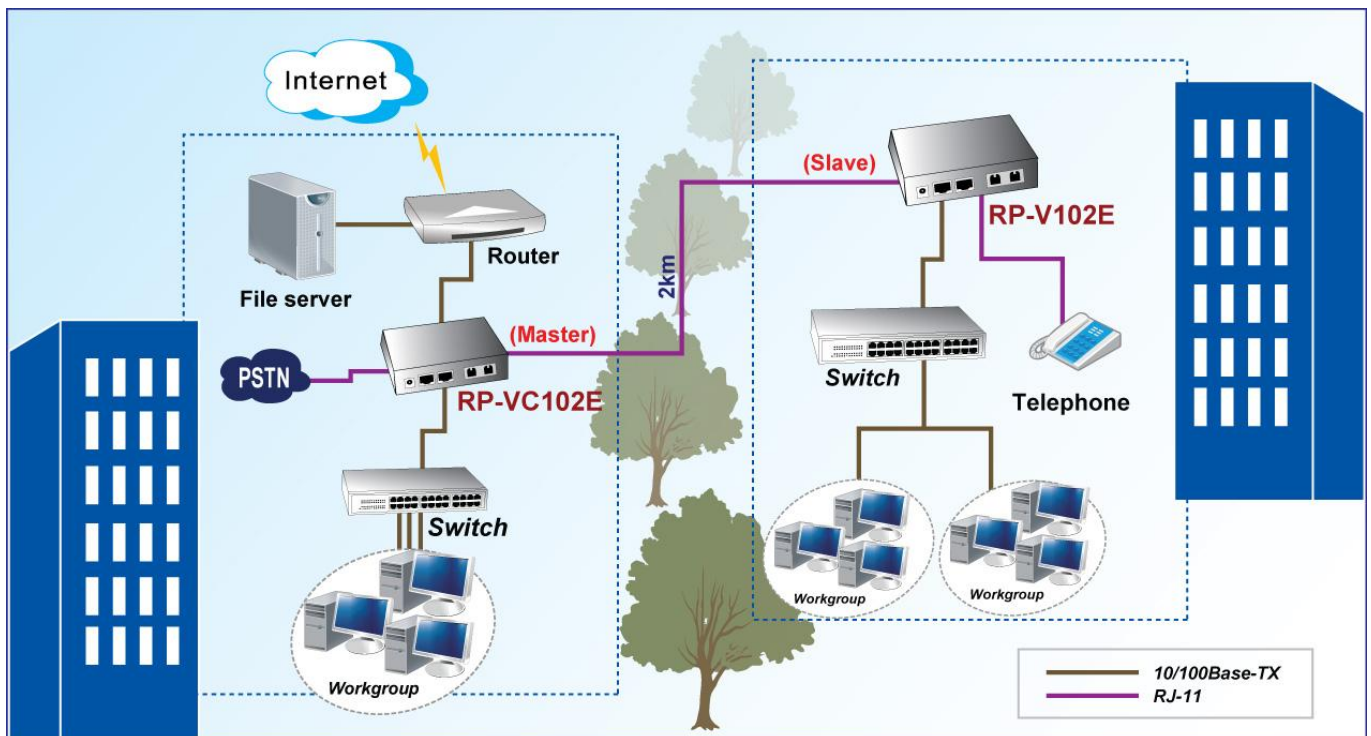
Feature

- Compliance with ITU-T G.993.1, G.993.2 VDSL/VDSL2 and SG15Q4 DMT
- EoVDSL2 port supports maximum throughput 100/60Mbps Down / Up Stream for distance up to 300 meters
- Trellis Coding support up to 1024 Discrete Multi-Tone (DMT) bin
- Supports DSL connection up to 2000 meters
- Selectable Fast and Interleaved modes
- Selectable fixed data rate and fixed SNR margin
- Provides one 4 Dip switch for mode selection (Master/Slave)
- Low-Latency for Video/Voice/Data applications

Specification

Standard	<ul style="list-style-type: none"> • IEEE802.3 standard • IEEE802.3u standard • Ethernet over VDSL2 • VDSL2 ITU-T G.993.2
Interface	<ul style="list-style-type: none"> • 2 * RJ-45 10/100Mbps Ethernet ports • 1 * RJ-11 connector for EoVDSL2 • 1 * RJ-11 connector for POTS telephone connection • 1 * DIP switch for mode selection
Network Media	<ul style="list-style-type: none"> • RJ-45 (Ethernet): Category 3, 4, 5 UTP/STP • RJ-11 (EoVDSL2): Twisted-Pair phone wire
VDSL Transmission	<ul style="list-style-type: none"> • ITU-T G.993.1/2, SG15Q4 DMT Compliance • Trellis Code with 1024 DMT bins • Max Data Rate: 100/60 Mbps
POTS	<ul style="list-style-type: none"> • Optional Annex A, B, or C
LED indicators	<ul style="list-style-type: none"> • Power*1, DSL*1, LAN*2, • M/S(Master/Slave Selection)*1
Power Supply	<ul style="list-style-type: none"> • External Power Adapter DC5V/2A
Environment	<ul style="list-style-type: none"> • Operating Temperature: 0°C~ 40°C • Operating Humidity: 10%~90% (Non-Condensing)
Dimension	<ul style="list-style-type: none"> • 120 * 90 * 28 mm
Certifications	<ul style="list-style-type: none"> • CE, FCC

Application



Ordering information

RP-VC102E Ethernet over VDSL2 Converter

REPOTEC CO., LTD.

3F., No.258, Liancheng Rd., Zhonghe District., New Taipei City 235, Taiwan

TEL: 886-2-8227-1888 FAX: 886-2-8227-1818