

**RP-2801****1-P Print Fast Ethernet Server**

RP-2801 print server equips 1*Parallel interface for users to share their printer on Intranet/Internet, it allows the printer to be placed in the convenient location and connected directly on the Ethernet network. Users share a single printer among multiple network connected computers. It avoids the added cost of purchasing individual printers for each workstation or area.



It provides a convenient network printing solution for education and government institution with an RJ45 port for 10/100 Mbps wired connections.

A standard SNMP agent is permanent on these print servers. Any standard SNMP-based application can be used to access and manage these print servers. The print servers provide an embedded web server that can be accessed via proper web browsers. The subsidiary Windows-based PSAdmin utility helps administrator to setup print server environment, e.g. Netware, Windows 95/98/ME/NT/2000/XP/2003 /7/8/10, Mac or Linux system.

Feature

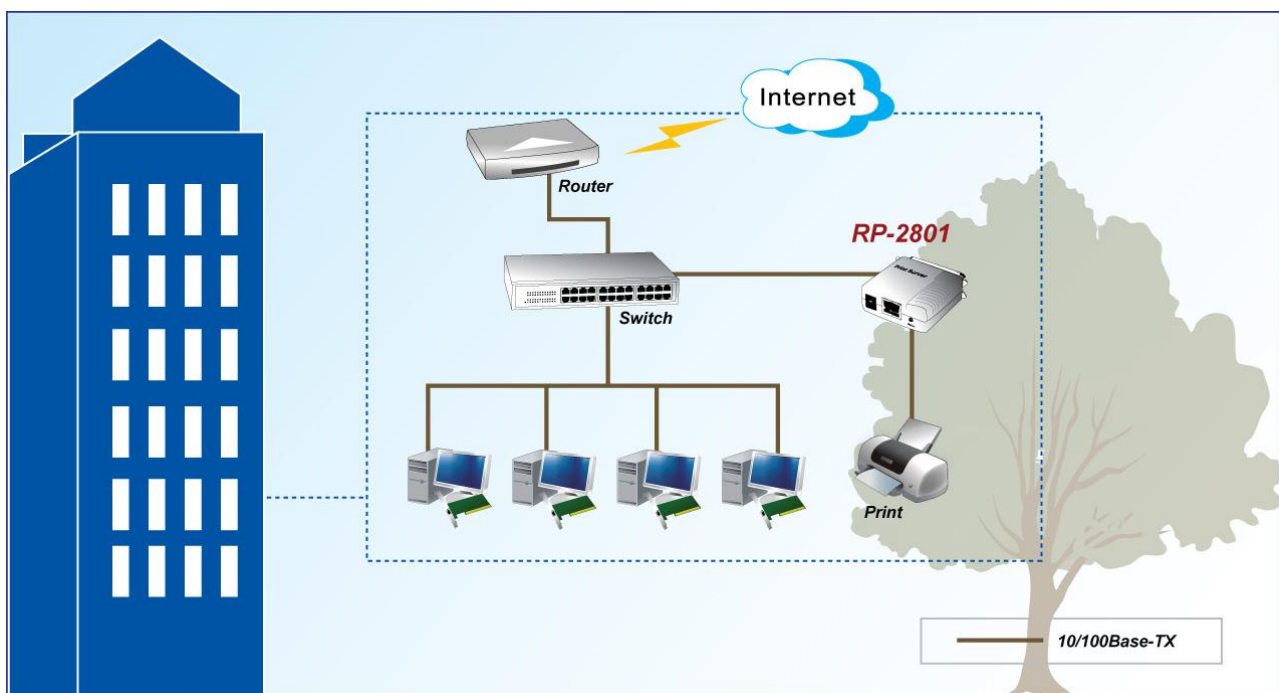
- Support Internet Printing Protocol(IPP)
- Support Print Job Control/Status
- Support Email Alert
- Support Rendezvous
- Support DHCP Client
- Support SNMP & HP Web JetAdmin
- Windows Print Monitor Technology
- Easy-to-use Setup Wizard

Specification

Standards	<ul style="list-style-type: none"> • IEEE802.3 10BASE-T, IEEE802.3u 100BASE-TX
Interface	<ul style="list-style-type: none"> • 1 * DB-36-pin male Centronics port, supporting bi-directional • 1 * RJ-45 10/100M port
Hardware	<ul style="list-style-type: none"> • ARM7-based processor • Flash: 1MB, System memory: 2MBytes SDRAM
OS Support	<ul style="list-style-type: none"> • Microsoft Windows 9X/ME/NT4 (SP6)/2000 (SP4)/XP (both 32 and 64)/Vista (both 32 and 64)/7 (both 32 and 64), Apple Mac OS 8.x/9.x and 10.2 or higher, Unix/Linux, Novell NetWare 3.12 (Bindery)/4.x (both Bindery and NDS) or higher.
Protocol Support	<ul style="list-style-type: none"> • IPX (Microsoft Windows Vista and 7 are exclusive), TCP/IP (LPR, IPP, RAW 9100), NetBEUI (Microsoft Windows XP, Vista, and 7 are exclusive), AppleTalk, SNMP (management), SMB

Management	<ul style="list-style-type: none"> • Web interface • Windows-based Setup Program
Default IP Address	<ul style="list-style-type: none"> • 192.168.10; DHCP: off
Software Upgradeable	<ul style="list-style-type: none"> • Web interface • Window-based Setup Program, TFTP
Led Indicator	<ul style="list-style-type: none"> • Power/Status: Orange • LAN Link: Yellow for 10Mbps, Green for 100Mbps
Reset Button	<ul style="list-style-type: none"> • Yes. (Reset, Load factory defaults, Self test page)
Power Adapter	<ul style="list-style-type: none"> • External power Adapter DC3.3V, 2A
Environment	<ul style="list-style-type: none"> • Operating Temperature: 0°C ~ 50°C • Operating Humidity: 0% ~ 70%
Dimension	<ul style="list-style-type: none"> • 55.5 * 52 * 22 mm
Certifications	<ul style="list-style-type: none"> • FCC, CE

Application



Ordering information

RP-2801 1-P Print Fast Ethernet Server