

RP-2803**3-P Fast Ethernet Print Server**

RP-2803 print server is equipped with 3*Parallel interface for users to share their printers on Intranet/Internet. The print server allows the printers to be placed in the convenient location and connected directly on the Ethernet network, and it is no need to connect printer with PC. Moreover, this print server supports the Simple Network Management Protocol (SNMP), which provides remote printer management and warning notice sending. A standard SNMP agent is permanent on these print servers. Any standard SNMP-based application can be used to access and manage these print servers. The print server provides an embedded web server which can be accessed via web browser, and it also supports subsidiary Windows-based PSAdmin utility which helps administrator to setup print server environment, e.g. Netware, Windows 95/98/ME/NT/2000/XP/2003, Mac or Linux system.

Feature

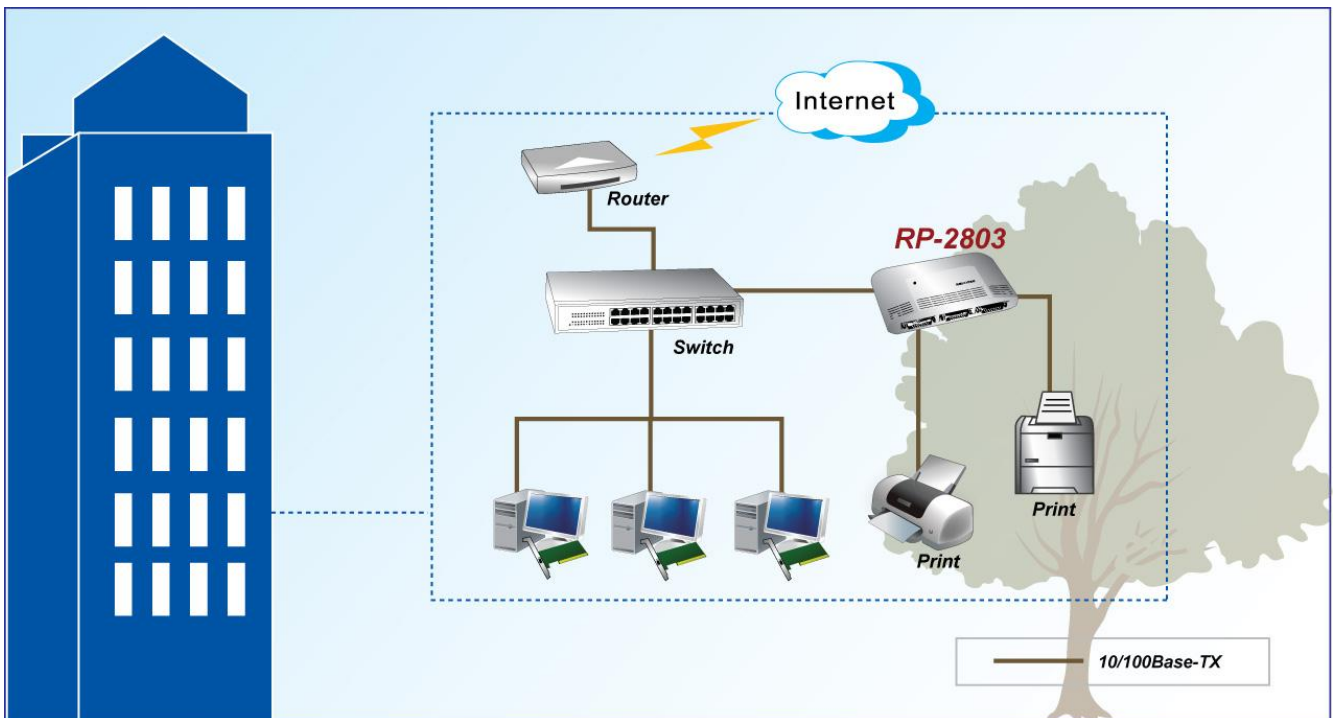
- Support Print Job Log
- Support Internet Printing Protocol (IPP)
- Support DHCP Client
- Support SNMP & HP Web JetAdmin
- Windows Print Monitor Technology
- Easy-to-use Setup Wizard

Specification

Standards	• IEEE802.3 10BASE-T, IEEE802.3u 100BASE-TX
Interface	• 3* DB-36-pin male Centronics port • 1 * RJ-45 10/100M port
Hardware	• ARM7-based processor • Flash: 1MB, System memory: 2MBytes SDRAM
OS Support	• Microsoft Windows 9X/ME/NT4 (SP6)/2000 (SP4)/XP (both 32 and 64)/Vista (both 32 and 64)/7 (both 32 and 64), Apple Mac OS 8.x/9.x and 10.2 or higher, Unix/Linux, Novell NetWare 3.12 (Bindery)/4.x (both Bindery and NDS) or higher.
Protocol Support	• IPX (Microsoft Windows Vista and 7 are exclusive), TCP/IP (LPR,

	IPP, RAW 9101, 9102, 9103), NetBEUI (Microsoft Windows XP, Vista, and 7 are exclusive), AppleTalk, SNMP (management), SMB.
Management	<ul style="list-style-type: none"> • Web interface • Windows-based Setup Program
Default IP Address	<ul style="list-style-type: none"> • 192.168.0.10; DHCP: off
Software Upgradeable	<ul style="list-style-type: none"> • Web interface, TFTP • Window-based Setup Program
LED Indicators	<ul style="list-style-type: none"> • Power/Status: Red • LAN Link: Yellow for 10Mbps, Green for 100Mbps
Reset Button	<ul style="list-style-type: none"> • Yes. (Reset, Load factory defaults, Port 1 self test page)
Power Adapter	<ul style="list-style-type: none"> • External power Adapter DC 5V, 2A
Environment	<ul style="list-style-type: none"> • Operating Temperature: 0°C~50°C • Operating Humidity: 0%~70%
Dimension	<ul style="list-style-type: none"> • 228 * 137 * 36 mm
Certifications	<ul style="list-style-type: none"> • FCC, CE

Application



Ordering information

RP-2803 3-P Fast Ethernet Print Server