

## RP-WUP211

### **1-USB2.0 Wireless-n Print Server with 1LAN**



RP-WUP211 is a Wireless-N USB Print Server, it allows users to share a standard USB printer with multiple devices over a WiFi network, or a wired LAN connection ,except host-based printers, e.g. CAPT, GDI, PPA. RP-WUP211 compatible with almost any wireless standards which serving as a primary or backup interface and the print server also offers an RJ45 port for 10/100 Mbps wired connections. Which enables you to place your printer in any location with network access and avoids the added cost of purchasing individual printers for each area.

RP-WUP211 supports Simple Network Management Protocol (SNMP) function for remote printer management and a warning sending. A standard SNMP agent is permanent on these print servers. Any standard SNMP-based application can be used to access and manage these print servers. The print servers provide an embedded web server that can be accessed via proper web browsers. The subsidiary Windows-based PSAdmin utility helps administrator to setup print server environment.

RP-WUP211 features a WiFi Protected Setup (WPS) button for quick and easy connection to your wireless network, the compatibility with USB 2.0 standards makes this network print server perfect for installation into mixed environments.

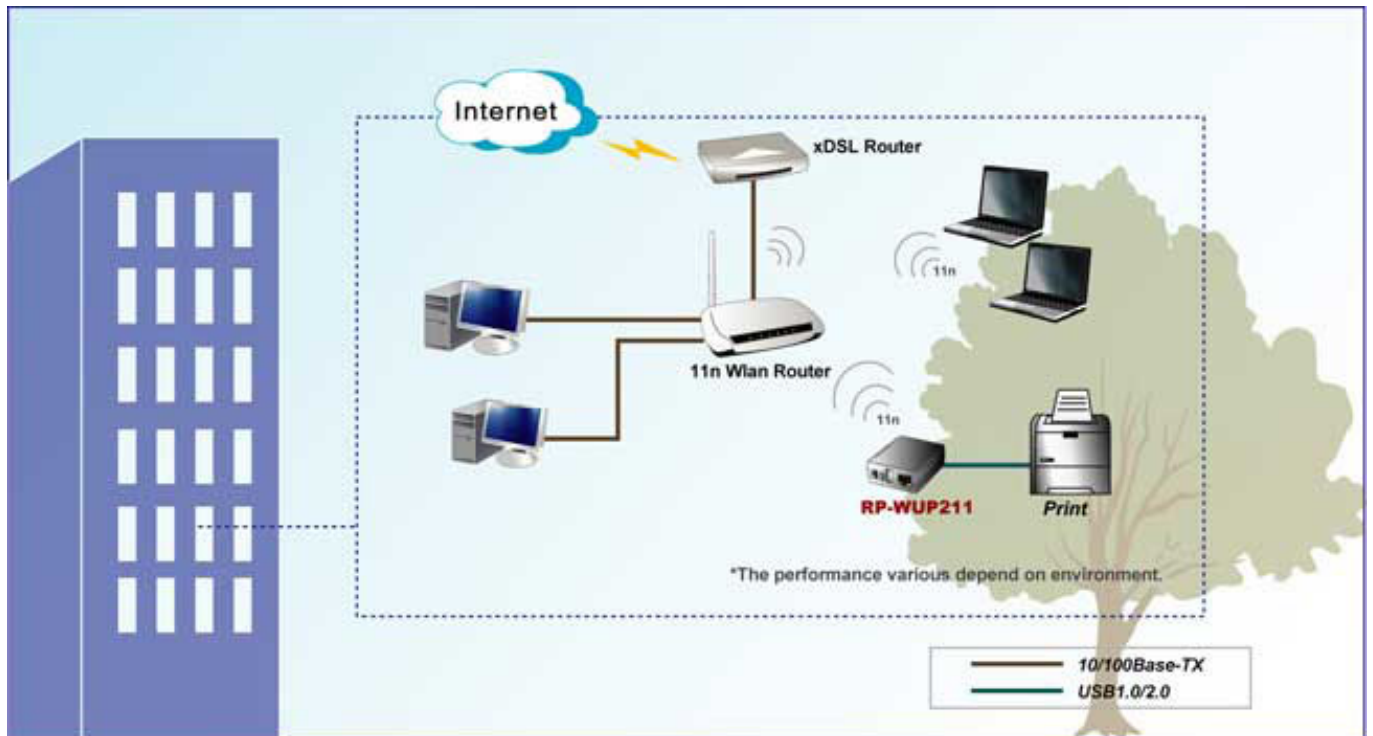
### Feature

- Complies with IEEE 802.11b/g/n standard
- Provide one USB2.0 High Speed port (PID1) to connect to printer
- Support DHCP Server and Client protocols
- Support UPnP
- Support LDP/LPR (Standard TCP/IP Printer Port)
- Built-in Reset Button for Reset/Load Factory Defaults/Self-test page
- SNMP & HP Web JetAdmin Support

## Specification

<b>Standards</b>	<ul style="list-style-type: none"> <li>• IEEE802.3(10BaseT Ethernet )</li> <li>• IEEE802.3u(100Base Fast Ethernet)</li> <li>• USB2.0 high speed compliant port</li> <li>• Complies with IEEE 802.11b/g/n standard</li> </ul>
<b>Interface</b>	<ul style="list-style-type: none"> <li>• 1* USB 2.0 (High speed), supporting 1.5Mbps (low speed) and 12Mbps (full speed) data transmission rate.</li> <li>• 1* 10/100Mbps RJ-45 (UTP) connector</li> </ul>
<b>Antenna</b>	<ul style="list-style-type: none"> <li>• Antenna on board</li> </ul>
<b>Reset Button</b>	<ul style="list-style-type: none"> <li>• Built-in Reset Button</li> </ul>
<b>WPS Button</b>	<ul style="list-style-type: none"> <li>• Built-in WPS Button</li> </ul>
<b>CPU</b>	<ul style="list-style-type: none"> <li>• ARM-based SoC</li> </ul>
<b>Flash</b>	<ul style="list-style-type: none"> <li>• 1Mbytes</li> </ul>
<b>System Memory</b>	<ul style="list-style-type: none"> <li>• 8Mbytes SDRAM</li> </ul>
<b>Network Protocol Management</b>	<ul style="list-style-type: none"> <li>• TCP/IP, IPX, NetBEUI, AppleTalk, LPR, SMB over IP</li> <li>• Web interface</li> <li>• Windows-based Setup Program</li> </ul>
<b>Software Upgradeable</b>	<ul style="list-style-type: none"> <li>• Web interface</li> <li>• Windows-based Setup Program</li> </ul>
<b>Radio Frequency</b>	<ul style="list-style-type: none"> <li>• 2.4Ghz ISM Band</li> </ul>
<b>MAC Method</b>	<ul style="list-style-type: none"> <li>• CSMA/CA with ACK</li> </ul>
<b>Security</b>	<ul style="list-style-type: none"> <li>• WEP64/128, WPA/WPA2-PSK</li> </ul>
<b>Modes</b>	<ul style="list-style-type: none"> <li>• Ad-Hoc and Infrastructure</li> </ul>
<b>Data Transfer Rate</b>	<ul style="list-style-type: none"> <li>• 1, 2, 5.5, 6, 9, 11, 12, 18, 24, 36, 48, 54, 108Mbps</li> </ul>
<b>Output Power</b>	<ul style="list-style-type: none"> <li>• 15 ~ 20dBm</li> </ul>
<b>Wireless Security</b>	<ul style="list-style-type: none"> <li>• WEP(64bit/128bit) and WPA/WPA2</li> </ul>
<b>LED</b>	<ul style="list-style-type: none"> <li>• Status/Power, USB, Wireless</li> </ul>
<b>Network Operating System</b>	<ul style="list-style-type: none"> <li>• Windows 95/98/Me/NT/2000/XP/2003/Vista/7/10 up</li> </ul>
<b>Power Supply</b>	<ul style="list-style-type: none"> <li>• External power adapter 5V 2A</li> </ul>
<b>Environment</b>	<ul style="list-style-type: none"> <li>• Operating Temperature: 0°C~50°C</li> <li>• Operating Humidity: 0%~70%</li> </ul>
<b>Dimension</b>	<ul style="list-style-type: none"> <li>• 72.6 * 60 * 25 mm</li> </ul>
<b>Certifications</b>	<ul style="list-style-type: none"> <li>• FCC, CE</li> </ul>

## Application



## Ordering information

**RP-WUP211** 1-USB2.0 Wireless-n Print Server with 1LAN (Antenna on board)