



## **RP-IPG882C**

### **8-P Gigabit PoE + 2-1000M TP/ SFP combo Industrial PoE+ Switch, with External DC power DIN**

RP-IPG882C is an industrial 8 port Gigabit high power POE switch providing 48-56V DC input sources. With its 2 optional SFP slot, users can add fiber-optic connectivity for obtain long distance communication.

RP-IPG882C complies with IEEE 802.3af/at standards with 8 port POE PSE port to power up 15W or 30W PD.

RP-IPG882C is well suited for applications in deploying IP surveillance, traffic monitoring and for a broad range of applications. It can be used as a stand-alone device for buses, trucks, and other vehicles for Surveillance purposes. It is being rigorously tested for your Security, Transportation and Telco application in climatically demanding environments with wide temperature range from -40 to 75 degrees C.

RP-IPG882C equips with external power DC in, power supply can be installed via terminal block and power jack. With IP30 industrial case protection, RP-IPG882C provides a high level of immunity against corrosion and electromagnetic interference. RP-IPG882C also allows either DIN rail or wall mounting for efficient use of cabinet space.

## **Features**

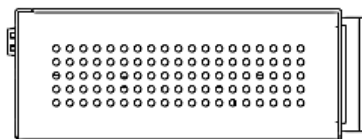
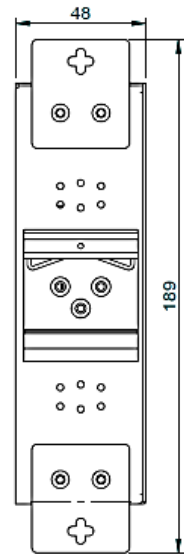
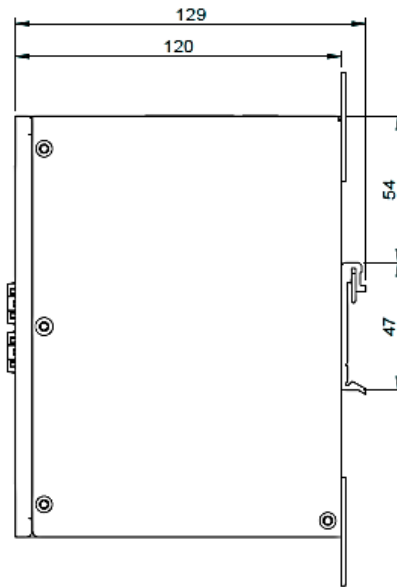
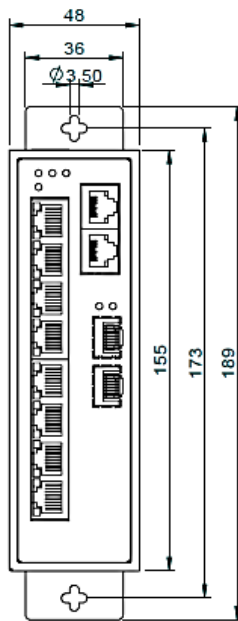
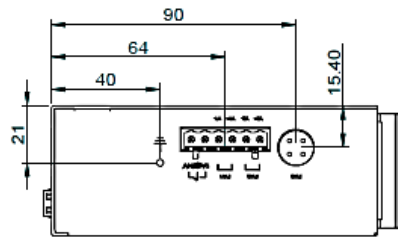
- Supports P.S.E. based on IEEE 802.3at up to 30 Watts per port
- RJ-45 port support Auto MDI/MDI-X Function
- SFP port supports 1000Base-X speed
- Store-and-Forward Switching Architecture
- Back-plane (Switching Fabric): 20Gbps
- 2M Memory Buffer
- 11K MAC Address Table
- Power Polarity Reverse Protect
- Overload Current Re-settable Fuse Present
- IP-30 Protection
- DIN Rail and Wall Mount Design
- Support Wide Operating Temperature -40 °C ~ 75°C
- PW3 is an independent Power din connection for external

## Specifications

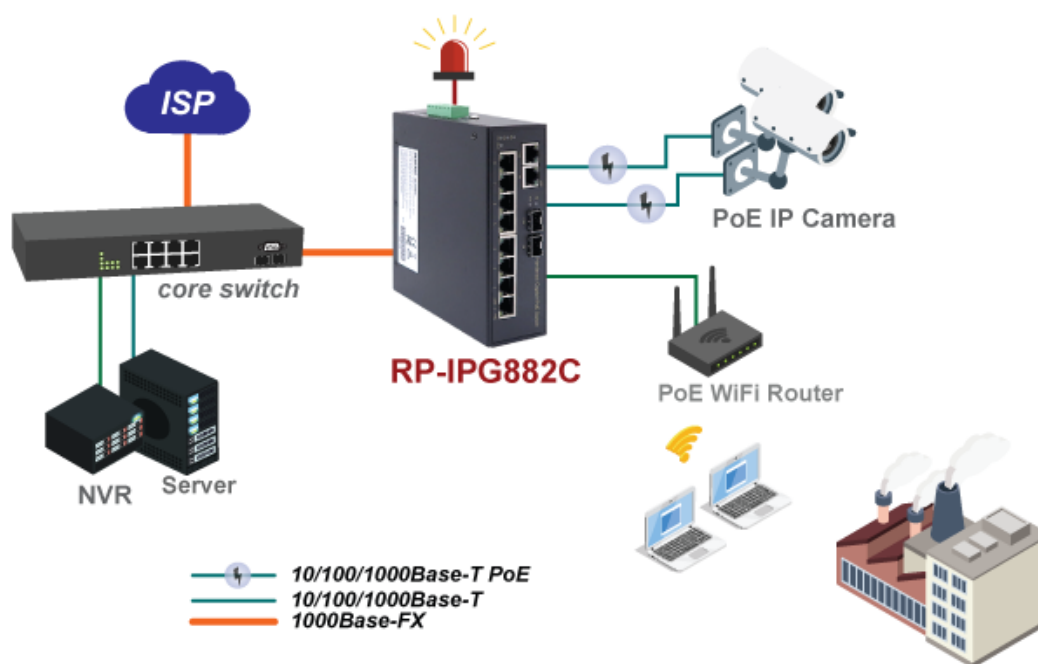
<b>Standards</b>	<ul style="list-style-type: none"> <li>● IEEE 802.3 10Base-T Ethernet</li> <li>● IEEE 802.3u 100Base-TX Fast Ethernet</li> <li>● IEEE 802.3z 1000Base-X Gigabit Ethernet</li> <li>● IEEE802.3x Flow Control and Back Pressure</li> <li>● IEEE802.3af for PoE, IEEE802.3at for PoE+</li> </ul>
<b>Switch Architecture</b>	<ul style="list-style-type: none"> <li>● Back-plane (Switching Fabric): 20Gbps</li> </ul>
<b>Data Processing</b>	<ul style="list-style-type: none"> <li>● Store and Forward</li> </ul>
<b>Transfer Rate</b>	<ul style="list-style-type: none"> <li>● 14,880pps for Ethernet port</li> <li>● 148,800pps for Fast Ethernet port</li> <li>● 1,488,000pps for Gigabit Fiber Ethernet port</li> </ul>
<b>Flow Control:</b>	<ul style="list-style-type: none"> <li>● IEEE 802.3x Flow Control and Back Pressure</li> </ul>
<b>Jumbo Frame</b>	<ul style="list-style-type: none"> <li>● 10KB</li> </ul>
<b>Mac Address</b>	<ul style="list-style-type: none"> <li>● 11K MAC</li> </ul>
<b>Buffer Memory</b>	<ul style="list-style-type: none"> <li>● 2M</li> </ul>
<b>Interface</b>	<ul style="list-style-type: none"> <li>● 8 10/100/1000TX RJ-45 with auto negotiation, Auto MDI/MDI-X function, Full/Half duplex with 802.3at/af PSE ports</li> <li>● 2 1000M SFP slot, 2 1000M TX combo ports</li> </ul>
<b>Network Cable</b>	<ul style="list-style-type: none"> <li>● UTP/STP Cat. 5 cable or above Cable EIA/TIA-568 10-ohm (100m)</li> </ul>
<b>Protocol</b>	<ul style="list-style-type: none"> <li>● CSMA/CD</li> </ul>
<b>LED Indicators</b>	<ul style="list-style-type: none"> <li>● Per unit: PW1(Green), PW2(Green), PW3(Amber) for External Power adapter, Alarm Relay(Amber)</li> <li>● Per port: RJ-45 port 1 to port 8 LNK(Green)/POE(Amber), RJ-45 port 9 to port 10 LNK(Green), SFP(Green)</li> </ul>
<b>Reverse polarity protection</b>	<ul style="list-style-type: none"> <li>● Present</li> </ul>
<b>Overload current protection</b>	<ul style="list-style-type: none"> <li>● Present</li> </ul>
<b>Power Consumption</b>	<ul style="list-style-type: none"> <li>● 5.76W@48 VDC full load, Without PoE</li> </ul>
<b>Power Supply</b>	<ul style="list-style-type: none"> <li>● PW1 and PW2 for Redundant Dual DC 48V-56V</li> <li>● PW3 for Power DIN to connect external power adapter DC 48-56V</li> <li>● Power input range DC 12-56VDC for Switch only</li> <li>● Power input range DC 48-56VDC for PoE</li> </ul>
<b>Alarm Relay Contact</b>	<ul style="list-style-type: none"> <li>● Relay outputs with current carrying capacity of 1 A @24VDC,</li> <li>● Relay in “open” circuit mode when PW1 and PW2 are connected. in “short” circuit mode when only one power supply is connected</li> </ul>
<b>PoE power budget</b>	<ul style="list-style-type: none"> <li>● Input Voltage 48VDC-56VDC</li> <li>● PoE power per port 30watts. Maximum 36Watts with 56VDC input</li> <li>● Total power budget 240Watts with 56VDC input</li> </ul>
<b>Removable Terminal Block</b>	<ul style="list-style-type: none"> <li>● Provide 2 Redundant power , Alarm relay contact ,6 Pin for PW1 and PW2 (PW3 is an independent Power din connection for external)</li> <li>● Wire range: 0.34mm<sup>2</sup> to 2.5mm<sup>2</sup></li> <li>● Solid wire (AWG):12-24/14-22</li> <li>● Stranded wire(AWG): 12-24/14-22</li> <li>● Torque:5lb-In/0.5Nm/0.56Nm</li> <li>● Wire Strip length: 7-8mm</li> </ul>
<b>Environment</b>	<ul style="list-style-type: none"> <li>● Operating temperature : -40°C~75°C</li> <li>● Storage temperature: -40°C ~85°C</li> </ul>

	<ul style="list-style-type: none"> <li>● Operating Humidity: 5% to 95% (Non-Condensing)</li> </ul>
<b>Dimension</b>	<ul style="list-style-type: none"> <li>● 155 x 48 x 120mm (LxWxD)</li> </ul>
<b>Case</b>	<ul style="list-style-type: none"> <li>● Rugged Metal ,IP30 Protection</li> </ul>
<b>Installation</b>	<ul style="list-style-type: none"> <li>● DIN Rail and Wall Mount Design</li> </ul>
<b>EMC/EMS</b>	<ul style="list-style-type: none"> <li>● CE, FCC</li> </ul>
<b>EMI</b>	<ul style="list-style-type: none"> <li>● FCC Part 15 Subpart B Class A, CE EN 55022 Class A</li> </ul>
<b>Safety</b>	<ul style="list-style-type: none"> <li>● IEC EN60950-1</li> </ul>
<b>Stability Testing</b>	<ul style="list-style-type: none"> <li>● IEC60068-2-32 (Free fall), IEC60068-2-27 (Shock), IEC60068-2-6 (Vibration)</li> </ul>

## Dimension



## Application



## Ordering information

**RP-IPG882C** 8-P Gigabit PoE + 2-1000M TP/ SFP combo Industrial PoE+ Switch, with External DC power DIN