

**>> RP-1708BD13****>> RP-1708BD15****>> RP-1708FC****>> RP-1708FC30****8-P Fast Ethernet +100FX (MM/30Km) Managed Switch****8-P Fast Ethernet + WDM Managed Switch**

This is a cost-effective and high-performance 8-port 10/100 Mbps Ethernet/Fast Ethernet Managed Switch with Broadcom solution. There are eight RJ-45 connectors and one 100FX connector for the switch - with Port 1 of the switch could be TX or FX port depending on which port is link-up. So this switch could have 8 * TX or 7 * TX + 1 * FX active ports, and the TX/FX function of Port 1 is auto-detected. This switch supports remote management function by SNMP, HTTP and Telnet operations. And it supports lots of functions for a L2 switch management, e.g. 802.1Q VLAN, 802.1x Port Security, Rate Control, Port Configuration, Port Mirroring, Port Statistics, and QoS functions. Auto MDI-X function is also supported for every TX port of the switch for easy cable connection.

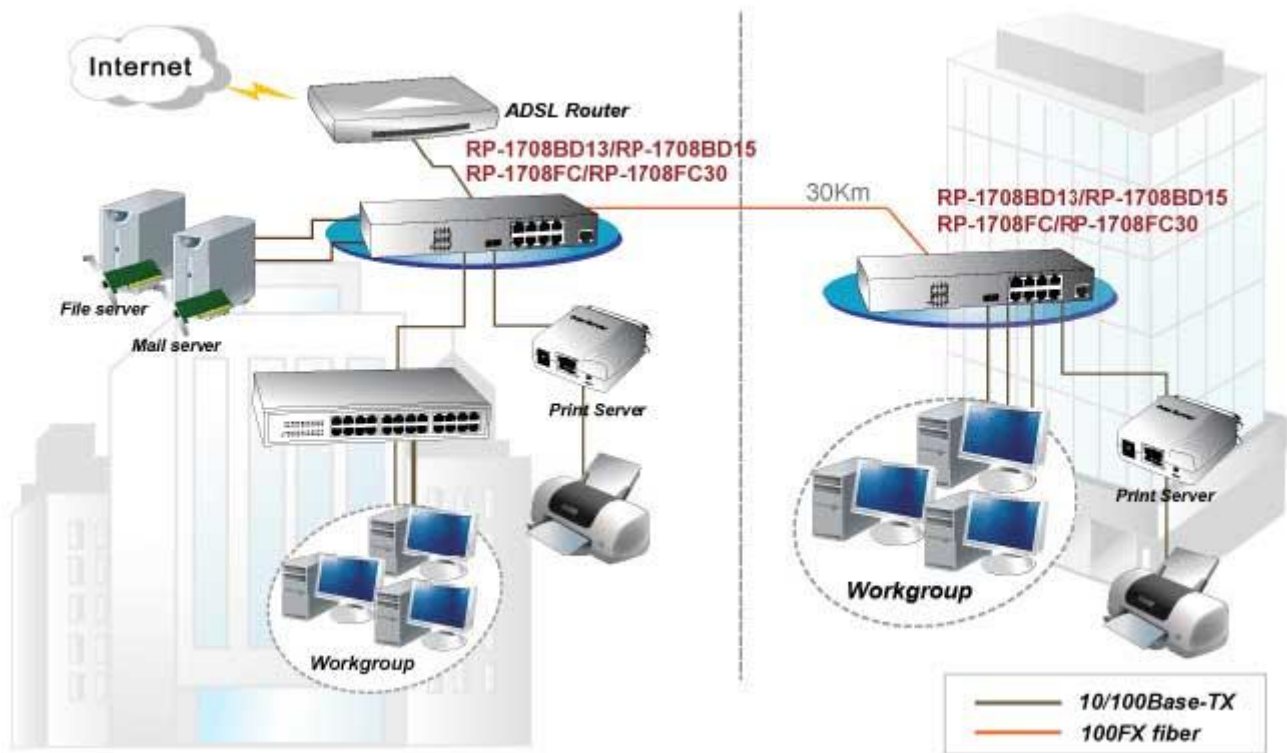
Feature

- Support out-band console and in-band SNMP/Http/Telnet management interface
- Prevents packet loss with back pressure and IEEE802.3x flow control functions
- Supports IEEE 802.1p Class of Service with 4-level priority queuing
- Support Static Mac Address access limit on port
- Support IEEE 802.1x Port Security function
- Support IEEE 802.1w Rapid Spanning Tree function
- Support broadcast/flooding/multicast traffic control
- Support Loopback detection function
- Support DHCP client function, Support RMON 1,2,3,9
- Support Text configuration download and upload
- Support remote port configuration setting and status monitoring

Specification

Standards	<ul style="list-style-type: none"> • IEEE802.3(10BaseT Ethernet), IEEE802.3u(100Base Fast Ethernet), • IEEE802.1D, IEEE802.1P, IEEE802.1Q, IEEE802.1x
Switching Capacity	<ul style="list-style-type: none"> • 8* RJ-45 10/100Mbps ports, 1* FX port with 100Mbps sharing with 1TX port • RJ-45 console port • 256K Bytes Packet Buffer, 4K Mac Table, 1536 bytes Max Packet Size
Flow Control	<ul style="list-style-type: none"> • Back pressure for half duplex, IEEE802.3x for full duplex
Management Security	<ul style="list-style-type: none"> • Out-band: Console (Command Line Interface) • In-band: SNMP/Telnet/Http • SNMP agent: Version. I, II, III, Support MIB II(Interface), Bridge MIB, Etherlike MIB, Private MIB
VLAN	<ul style="list-style-type: none"> • 802.1Q VLAN, 256 co-current groups maximum from eight active VLAN ID blocks
QoS	<ul style="list-style-type: none"> • 4 priority queues per port, Port-based & 802.1p tagged-based/ToS • DiffServ priority operation , WRR/SPQ scheduling algorithm
Spanning Tree	<ul style="list-style-type: none"> • Support IEEE 802.1w Rapid Spanning Tree
Port Mirror	<ul style="list-style-type: none"> • Egress/Ingress packets, support DA/SA filtering function
IEEE 802.1x	<ul style="list-style-type: none"> • Support Transparent and Authentication modes
Rate Control	<ul style="list-style-type: none"> • Limit on port for both Ingress/Egress traffic from 64Kbps to 100Mbps
IP Multicast	<ul style="list-style-type: none"> • Support IGMP Snooping and MVR function
LED Display	<ul style="list-style-type: none"> • Per Port: Link/Activity(Speed), FDX, Per Device: Power
Power Supply	<ul style="list-style-type: none"> • Internal Power AC100~240V, 50/60 Hz, Power Consumption: 6.5W
Environment	<ul style="list-style-type: none"> • Operating Temperature: 0°C to 50°C • Operating Humidity:5% to 95% (Non-Condensing)
Dimension	<ul style="list-style-type: none"> • 250 * 117 * 37mm
Certification	<ul style="list-style-type: none"> • FCC, CE

Application



Ordering information

RP-1708FC	8-P Ethernet +100FX (MM) Managed Switch
RP-1708FC30	8-P Ethernet +100FX (30Km) Managed Switch
RP-1708BD13	8-P Fast Ethernet + WDM TX:1310nm (15Km) Managed Switch
RP-1708BD15	8-P Fast Ethernet + WDM TX:1550nm (15Km) Managed Switch