

**>> RP-2402GIS+****24\*Fast Ethernet +2G(1000T/SFP)  
Ports L2+ Managed Switch**

RP-2402GI/S+, 24TX + 2G ports 10/100/1000

Mbps Ethernet management switch, is a cost efficient and high-performance management

switch. This switch supports ACL (Access Control List) L2/L2+L3/L3+L4 packet control

and remote management function by SNMP, Http and Telnet operations. Besides, it also supports lots of functions for L2 switch management, e.g. 802.1Q VLAN, 802.1x Port Security, Rate Control, Port Configuration, Port Mirroring, Port Statistics, QoS function. Auto-MDIX function is also supported for every port of the switch for easy cable connection.

**Feature**

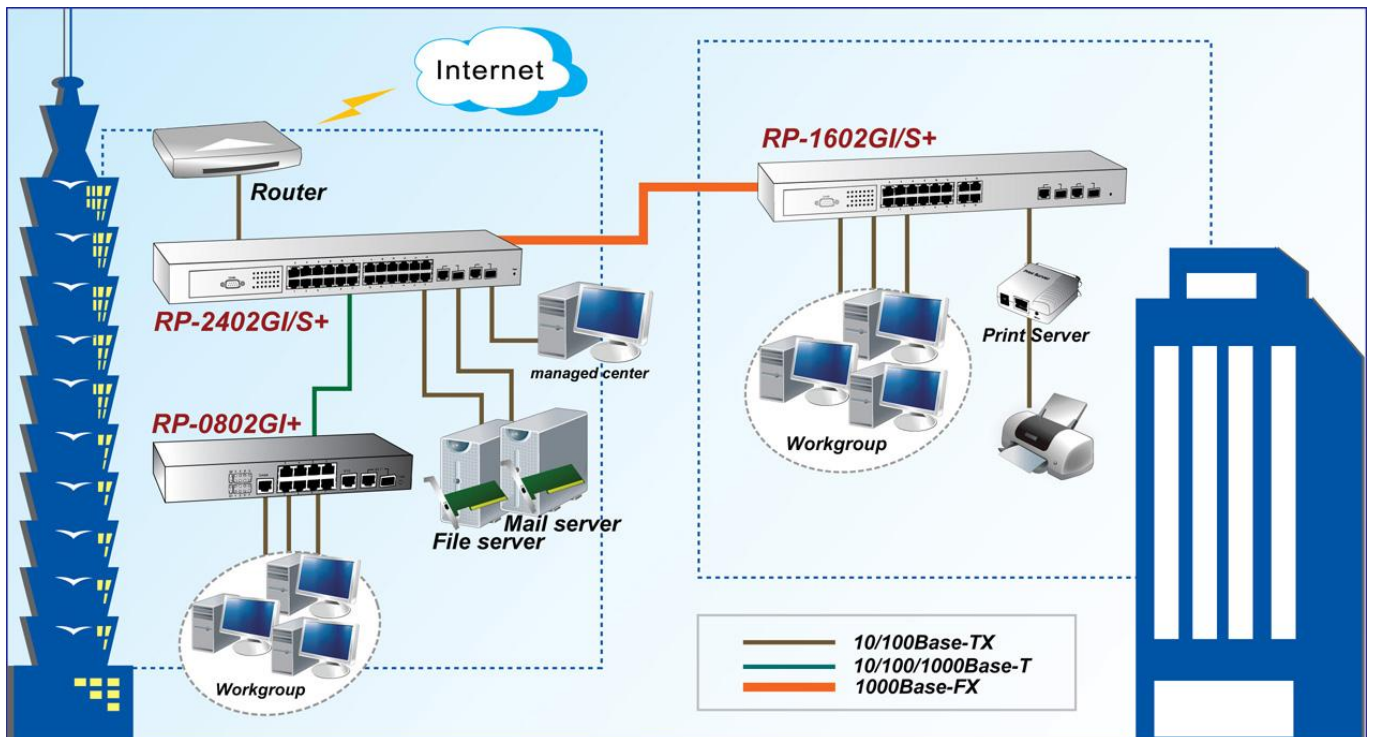
- Support out-band console and in-band SNMP/Http/Telnet management interface
- Support Https web security function
- 4 priority queues are supported on each port for QoS application
- Support port-based VLAN, 802.1Q VLAN and Private VLAN
- Support protected port and LoopBack Detection function
- Support Q-in-Q(double tagging) function
- Support static Mac address access limit and dynamic Mac address number on port
- Support IP-Mac Binding on port
- Support IEEE 802.1x port security function, and Dynamic VLAN, Guest VLAN functions
- Support ACL function for L2 ~ L4 packet control
- Support 802.1d Spanning Tree Compatible & 802.1w Rapid Spanning Tree
- Support ingress/egress rate control on port
- Support broadcast/multicast/flooding traffic control
- Support IP Multicast with IGMP snooping / query / fast leave / filtering /group limited /MVR
- Support DHCP Client / DHCP Relay / DHCP Option 82 / DHCP Snooping function
- Support RMON 1,2,3,9
- Support remote port configuration setting and statistics monitoring
- Support Text configuration download and upload

## Specification

<b>Standards</b>	<ul style="list-style-type: none"> <li>• IEEE802.3(10BaseT Ethernet ),</li> <li>• IEEE802.3u(100Base Fast Ethernet),</li> <li>• IEEE802.3ab(1000BaseT), IEEE802.3z(1000Base)</li> <li>• IEEE802.1w, IEEE802.1P, IEEE802.1Q, IEEE802.1x</li> </ul>
<b>Ports</b>	<ul style="list-style-type: none"> <li>• 24* RJ45 ports, with 10/100Mbps, Full/Half duplex auto-negotiation and Auto-MDIX function</li> <li>• 2* RJ45/SFP ports for gigabit connections (Port 25,26)</li> <li>• Console Port: DB9 console port</li> </ul>
<b>LED</b>	<ul style="list-style-type: none"> <li>• Per Port : Link/Activity</li> <li>• Per Device : Power</li> </ul>
<b>Filter &amp; Forwarding Rate</b>	<ul style="list-style-type: none"> <li>• Full line speed</li> </ul>
<b>Transmission method</b>	<ul style="list-style-type: none"> <li>• Store-and-forward</li> </ul>
<b>Switching Capacity</b>	<ul style="list-style-type: none"> <li>• 8.8Gbps</li> </ul>
<b>Packet Buffer</b>	<ul style="list-style-type: none"> <li>• 384K Bytes (Packet buffer &amp; Control Memory)</li> </ul>
<b>Mac Table Size</b>	<ul style="list-style-type: none"> <li>• 8K</li> </ul>
<b>Max Packet Size</b>	<ul style="list-style-type: none"> <li>• 2048 bytes (including 4 bytes CRC checksum)</li> </ul>
<b>Flow Control</b>	<ul style="list-style-type: none"> <li>• Back pressure for half duplex, IEEE802.3x for full duplex</li> </ul>
<b>Management</b>	<ul style="list-style-type: none"> <li>• Out-band : Console (Command Line Interface)</li> <li>• In-band : SNMP/Telnet/Http/Https(SSL)</li> </ul>
<b>DHCP</b>	<ul style="list-style-type: none"> <li>• Support DHCP Client / Relay / Option 82 functions</li> </ul>
<b>SNMP agent</b>	<ul style="list-style-type: none"> <li>• Version. 1, 2c</li> <li>• Support MIB II(RFC1213), Bridge MIB, VLAN MIB, Private MIB</li> </ul>
<b>RMON</b>	<ul style="list-style-type: none"> <li>• Groups 1, 2, 3, 9(Alarm, Statistics, History, Event)</li> </ul>
<b>Management Security</b>	<ul style="list-style-type: none"> <li>• Limit by IP(Subnet)/Action(View/Modify)/Interface(Telnet/Web/SNMP)</li> </ul>
<b>Logging</b>	<ul style="list-style-type: none"> <li>• Support Local Logging and Syslog</li> </ul>
<b>Security</b>	<ul style="list-style-type: none"> <li>• Static Mac ID Access Limit: Limit on port</li> <li>• Dynamic Mac ID Limit: Limit Mac ID number on port</li> <li>• IP-Mac-Port Binding: 256 entries</li> <li>• IEEE 802.1x: Support Transparent and Authentication modes and support Dynamic VLAN and Guest VLAN functions</li> </ul>
<b>VLAN</b>	<ul style="list-style-type: none"> <li>• SVL/IVL Mode</li> <li>• Port-based VLAN / Metro VLAN / Private VLAN / Q-in-Q / GVRP</li> <li>• 802.1Q VLAN, with 1024 co-current groups maximum from 4094 VLANs</li> </ul>
<b>LoopBack Detection</b>	<ul style="list-style-type: none"> <li>• Yes</li> </ul>
<b>Protected Port</b>	<ul style="list-style-type: none"> <li>• Yes</li> </ul>
<b>Trunking</b>	<ul style="list-style-type: none"> <li>• 14 groups Max. with Static and Dynamic combined up to 8 ports for a trunk group</li> </ul>
<b>QoS</b>	<ul style="list-style-type: none"> <li>• Four priority queues per port, Port-based / 802.1p / DiffServ QoS With Strict Priority / WRR scheduling</li> </ul>
<b>Spanning Tree</b>	<ul style="list-style-type: none"> <li>• Support IEEE 802.1w Rapid Spanning Tree, /w 802.1D compatible mode</li> </ul>
<b>Port Mirror</b>	<ul style="list-style-type: none"> <li>• for Egress/Ingress packets, support DA/SA filtering function</li> </ul>
<b>Rate Control</b>	<ul style="list-style-type: none"> <li>• Limit on port for both Ingress/Egress traffic, with 62.5Kbps or 1Mbps step</li> </ul>
<b>Storm Control</b>	<ul style="list-style-type: none"> <li>• for broadcast/multicast/flooding traffic control</li> </ul>
<b>IP Multicast</b>	<ul style="list-style-type: none"> <li>• Support IGMP Snooping(256 groups Max.) / Query / Fast Leave / Filtering Profile /Group Limited Number Per Port / MVR</li> </ul>

<b>ACL</b>	<ul style="list-style-type: none"> <li>L2/L2+L3/L3+L4 packet control ( 700 entries share with IP-MAC-Port)</li> </ul>
<b>Maintenance</b>	<ul style="list-style-type: none"> <li>Software Upgrade: Out-band: Xmodem, In-band: TFTP</li> <li>Support Event Log and Syslog</li> <li>Support Text Configuration</li> </ul>
<b>Power Supply</b>	<ul style="list-style-type: none"> <li>Internal power supply 100-240VAC, 50/60 Hz</li> </ul>
<b>Power Consumption</b>	<ul style="list-style-type: none"> <li>13W</li> </ul>
<b>Environment</b>	<ul style="list-style-type: none"> <li>Operating temperature : 0°C to 50°C</li> <li>Operating Humidity:10% to 90% (Non-Condensing)</li> </ul>
<b>Dimension</b>	<ul style="list-style-type: none"> <li>430 * 105 * 44 mm</li> </ul>
<b>Certifications</b>	<ul style="list-style-type: none"> <li>FCC, CE</li> </ul>

## Application



## Ordering information

**RP-2402GIS+** 24\*Fast Ethernet +2G(1000T/SFP) Ports L2+ Managed Switch