



## RP-500WB

### 5-P Fast Ethernet Web Smart Switch

RP-500WB provides administrators an easy-to-use Web Browser to manage the networks. It eliminates the need to change the IP-address and provides easy initial installation.

The administrators are able to access and manage the network remotely instead of stand by and configure those switches via the console port.

RP-500WB provides the utility to auto-discover the switch from LAN side. By RP-500WB's exclusively browsing utility, MIS staffs can monitor the performance of the switch and optimize network configuration, set up VLANs or traffic priority, anytime, anywhere. The IGMP Snooping and Bandwidth Control feature allow administrators / IPTV providers to reserve bandwidth for a variety of applications that require high bandwidth, or provide them with the highest priority.



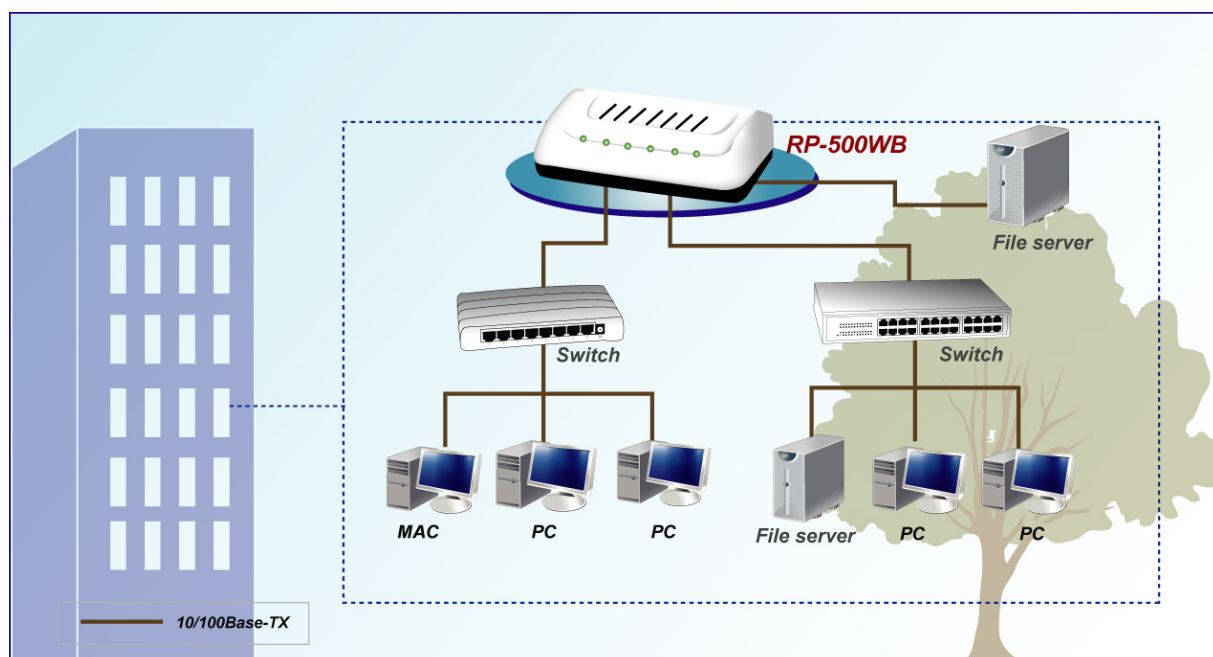
### Feature

- 5-Port 10/100Mbps auto-MDI/MDI-X interfaces
- Built-in web management for quick, ease-of-use configuration, and network deployment
- IEEE 802.3x flow control for full duplex and Backpressure for half duplex operation
- Port based VLAN, VLAN tag configuration
- QoS, 8-level bandwidth control
- Broadcast storm, back pressure algorithm to ensure Maximum performance and stability
- Store-and-Forward with wire-speed filtering and forwarding switching
- 2K MAC address, handle up to 1552bytes Frame Size

## Specification

<b>Standards</b>	<ul style="list-style-type: none"> <li>• IEEE 802.3: 10 BASE-T</li> <li>• IEEE 802.3u: 100 BASE-TX</li> <li>• IEEE 802.3x: Flow-control</li> </ul>
<b>Interface</b>	<ul style="list-style-type: none"> <li>• 5* RJ45 ports: with 10/100Mbps, Full/Half duplex auto-negotiation and Auto-MDIX function</li> </ul>
<b>Transmission method</b>	<ul style="list-style-type: none"> <li>• Store-and-forward</li> </ul>
<b>MAC Address</b>	<ul style="list-style-type: none"> <li>• Support 2K MAC address table with 4-way hash algorithm</li> </ul>
<b>Memory Buffer</b>	<ul style="list-style-type: none"> <li>• 384Kbits Packet Buffer</li> </ul>
<b>Flow Control</b>	<ul style="list-style-type: none"> <li>• 802.3x Flow Control in full-duplex mode</li> <li>• Backpressure Flow Control in half-duplex mode</li> </ul>
<b>Port configuration</b>	<ul style="list-style-type: none"> <li>• Port speed duplex mode selection</li> <li>• Flow control disable / enable</li> <li>• Port disable / enable</li> <li>• Port priority on each port</li> </ul>
<b>QoS Scheme</b>	<ul style="list-style-type: none"> <li>• Allow to assign low / high priority on each port</li> <li>• 4-level priority ratio in QoS policy</li> </ul>
<b>VLAN</b>	<ul style="list-style-type: none"> <li>• 5 port-based VLAN groups / VLAN tag</li> </ul>
<b>Flow Control</b>	<ul style="list-style-type: none"> <li>• 802.3x Flow Control in full-duplex mode</li> <li>• Backpressure Flow Control in half-duplex mode</li> </ul>
<b>Data Transfer Rate</b>	<ul style="list-style-type: none"> <li>• Ethernet: 10Mbps (half duplex); 20Mbps (full duplex)</li> <li>• Fast Ethernet: 100Mbps (half duplex); 200Mbps (full duplex)</li> </ul>
<b>LED Indicators</b>	<ul style="list-style-type: none"> <li>• Power LED x 1 for power status</li> <li>• Port LED x 5 for Ethernet Link/Activity status</li> </ul>
<b>Power Supply</b>	<ul style="list-style-type: none"> <li>• External Power Adapter DC5V0.6A</li> </ul>
<b>Environment</b>	<ul style="list-style-type: none"> <li>• Operating temperature : 0°C to 40°C</li> <li>• Operating Humidity: 5% to 90% (Non-Condensing)</li> </ul>
<b>Dimension</b>	<ul style="list-style-type: none"> <li>• 118 x 70 x 25mm</li> </ul>
<b>Certification</b>	<ul style="list-style-type: none"> <li>• FCC, CE</li> </ul>

## Application



## Ordering information

**RP-500WB**      5-P Fast Ethernet Web Smart Switch