



RP-GS2024I

20-P SFP(100/1G) + 4-TP/SFP combo L2+ Managed Switch



RP-GS2024I is a cost efficient and high-performance L2+ Ethernet management switch - 20-port (100/1G) SFP+ 4-Port SFP/RJ45 combo are supported. This switch supports remote management by SNMP, Http and Telnet interfaces, and local management by console interface. RP-GS2024I supports lots of L2 switch management functions, e.g. 802.1Q VLAN, 802.1x Security, Rate Control, Port Configuration, Port Mirroring, Port Statistics, QoS functions, ... etc.

Features

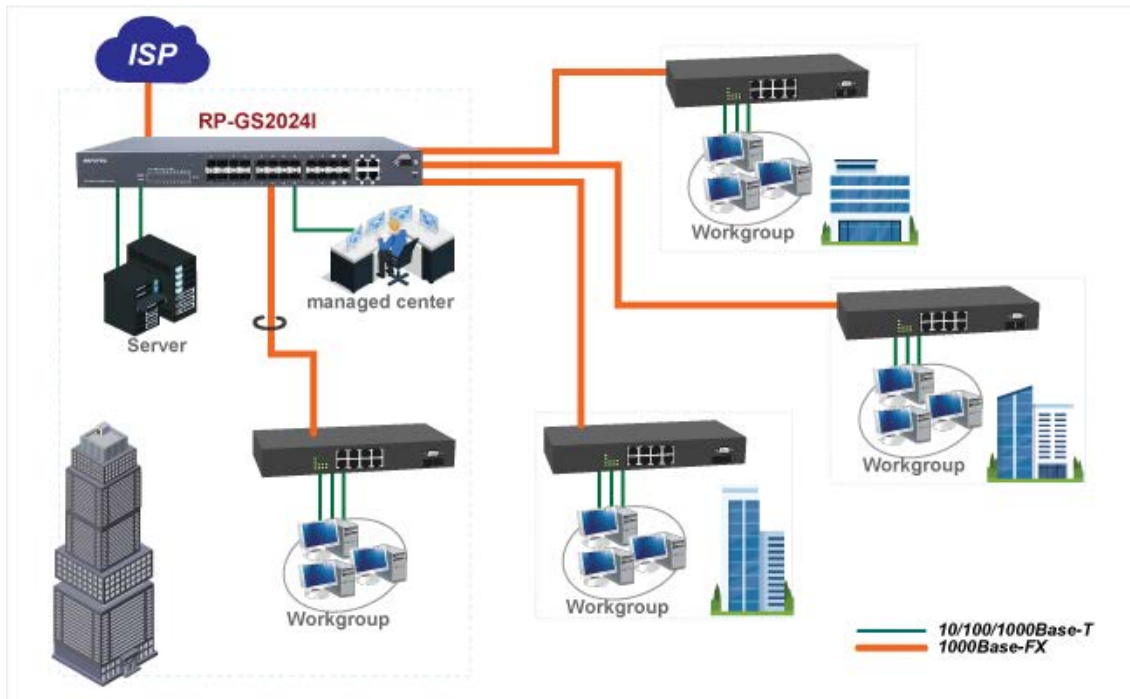
- 20 * SFP ports, support 100Base FX or 1000Base-X
- 4* RJ45/SFP(100/1G) ports, auto-detect RJ45/SFP connection
- IPv6 management
- IPv4 Static routing
- 8 priority queues are supported on each port for QoS application
- Port-based VLAN, 802.1Q VLAN, Voice VLAN and Q-in-Q(double tagging) function
- Protected Port and LoopBack Detection function
- IEEE 802.1x security function, and VLAN assignment, Guest VLAN functions
- Static Mac address access limit and Dynamic Mac address number on port
- IEEE802.1d & 802.1w & 802.1s
- IP Multicast with IGMP snooping / query / fast leave / filtering /group limited /MVR
- DHCP Client / DHCP Option 82 Relay / DHCP Snooping function
- ACL function for L2 ~ L4 packet control, Ingress/Egress rate control on port
- Broadcast/Multicast/Unicast storm control
- ARP inspection / IP source guard
- RMON 1,2,3,9
- SFP Transceiver DDMI function
- Remote port configuration setting and statistics monitoring
- Text configuration download and upload

Specifications

Standards	<ul style="list-style-type: none"> • IEEE802.3(10BaseT Ethernet), IEEE802.3u(100Base Fast Ethernet), • IEEE802.3ab(1000BaseT), IEEE802.3z(1000Base),IEEE802.3x • IEEE802.1D, IEEE802.1w, IEEE802.1P, IEEE802.1Q, IEEE802.1x • IEEE802.3ad, IEEE802.1ad
Interface	<ul style="list-style-type: none"> • Port1-24: 100/1G SFP Port • Port21-24: SFP/UTP Combo Port
Console Port	<ul style="list-style-type: none"> • DB9 console port
CPU	<ul style="list-style-type: none"> • 416MHz MIPS 24KEc CPU as the main processor which integrated on switch controller
Memory	<ul style="list-style-type: none"> • Flash : SPI 16M Bytes , RAM:DDRII 128M Bytes
Packet Buffer	<ul style="list-style-type: none"> • 512K Bytes
Mac Table Size	<ul style="list-style-type: none"> • 16K
Max Packet Size	<ul style="list-style-type: none"> • 9600 Bytes
Switching capability	<ul style="list-style-type: none"> • 14880pps at 10Mbps • 148810pps at 100Mbps • 1488095pps at 1Gbps with 64 bytes packets
Switch capacity	<ul style="list-style-type: none"> • 48Gbps
Forwarding Rate	<ul style="list-style-type: none"> • 35.7Mpps
Port Control	<ul style="list-style-type: none"> • Port speed, duplex mode, and flow control • Port Auto MDI/MDI-X • Port frame size (jumbo frames), Maximum ingress frame size (10056 bytes) • Port state (administrative status) • Port status (link monitoring) • Port statistics (MIB counters)
L2 Switching	<ul style="list-style-type: none"> • Auto MAC address learning/aging and MAC addresses (static) • DHCP snooping • ARP inspection • Port Mirroring • Flow mirroring
L3 Switching	<ul style="list-style-type: none"> • DHCP option 82 relay • UPNP • IPv4 Unicast: Static routing
VLANs	<ul style="list-style-type: none"> • IEEE 802.1Q static VLAN(4096 entries Max.), Voice VLAN, • Port isolation, Private VLAN Static, MAC based VLAN, • Protocol based VLAN, IP subnet based VLAN
Spanning Tree	<ul style="list-style-type: none"> • IEEE 802.1s MSTP(Multiple spanning tree) • IEEE 802.1w RSTP(Rapid spanning tree) • IEEE 802.1D STP(Spanning tree) • BPDU Guard & Restricted Role • Error Disable Recovery
Link Aggregation	<ul style="list-style-type: none"> • Static and LACP
IP Multicast	<ul style="list-style-type: none"> • IGMP v2 and v3 snooping • MLD v1 snooping • IGMP filtering profile • IPMC throttling, filtering, leave proxy • MVR and MVR profile
QoS	<ul style="list-style-type: none"> • Traffic Classes (8 active priorities) • Port Default Priority, User Priority, • Input priority mapping

	<ul style="list-style-type: none"> • QoS Control List (QCL Mode) • Storm Control for UC, BC and Unknown • Port policers • Global/VCAP (ACL) policers • Port egress shaper • Queue egress shapers • DiffServ (RFC2474) remarking • Tag remarking • Scheduler mode
Security	<ul style="list-style-type: none"> • Port-Based 802.1X, Single 802.1X, Multiple 802.1X, • MAC-Based Authentication • VLAN Assignment , QoS Assignment, Guest VLAN • RADIUS Accounting • MAC Address Limit • IP MAC binding, IP/MAC binding dynamic to static • TACACS+ • Web & CLI Authentication • Authorization (15 user levels) • ACLs for filtering/policing/port copy • IP source guard
Synchronization	<ul style="list-style-type: none"> • NTPv4 Client
SFP DDMI	<ul style="list-style-type: none"> • Support
Management	<ul style="list-style-type: none"> • DHCP Client, • DNS client, proxy • HTTP Server • CLI - Console Port & Telnet • Text Configuration download or upload • Management access filtering • HTTPS • SSHv2 • IPv6 Management • System Syslog • Software Upload via web • SNMP v1 / v2c / v3 Agent • RMON (Group 1, 2, 3 & 9) • RMON alarm and event(CLI,web) • SNMP multiple trap destinations • IEEE 802.1AB-2005 Link Layer Discovery LLDP • Cisco Discovery filtering - CDP • sFlow • Daylight Saving
LED Indicators	<ul style="list-style-type: none"> • Per Port : Link/Act (Green: Gigabit, Amber:10/100M) • Per Device : Power and System
Power Supply	<ul style="list-style-type: none"> • Internal Power supply 100~240VAC, 50/60 Hz • Optional 48VDC power module
Environment	<ul style="list-style-type: none"> • Operating temperature: 0°C to 50°C • Operating Humidity: 10% to 90% (Non-Condensing)
Dimension	<ul style="list-style-type: none"> • 440 * 172 * 44 mm
Certification	<ul style="list-style-type: none"> • FCC, CE

Application



Ordering information

RP-GS2024I	20-P SFP(100/1G) + 4-SFP/TP combo L2+ Managed Switch
RP-GS2024I/D	20-P SFP(100/1G) + 4-SFP/TP combo L2+ Managed Switch W/ DC Power Input Module
Optional:	
MOD-GS48DC	48VDC power module for RP-GS2024I