

**>> RP-1450FC****>> RP-1450FT****100 Base - FX PCI Ethernet Adapter,  
SC/ST**

RP-1450FC/FT is a PCI Fast Ethernet adapter for using in personal computers with PCI computer bus slots, It fully compliant with all IEEE 802.3u and 100Base-FX standards, It design for both Standards profile and Low profile PC

and two types of fiber transceiver SC or ST. The maximum transfer distance of the device is 2km.

LED indicators (LINK/ACT, FDX) on the bracket will

help users to oversee the network/board link, activities, collision and full-duplex status.

The adapter has PCI 2.2 plug-and-play capability and the driver support for most popular operating systems.



RP-1450FC



RP-1450FT

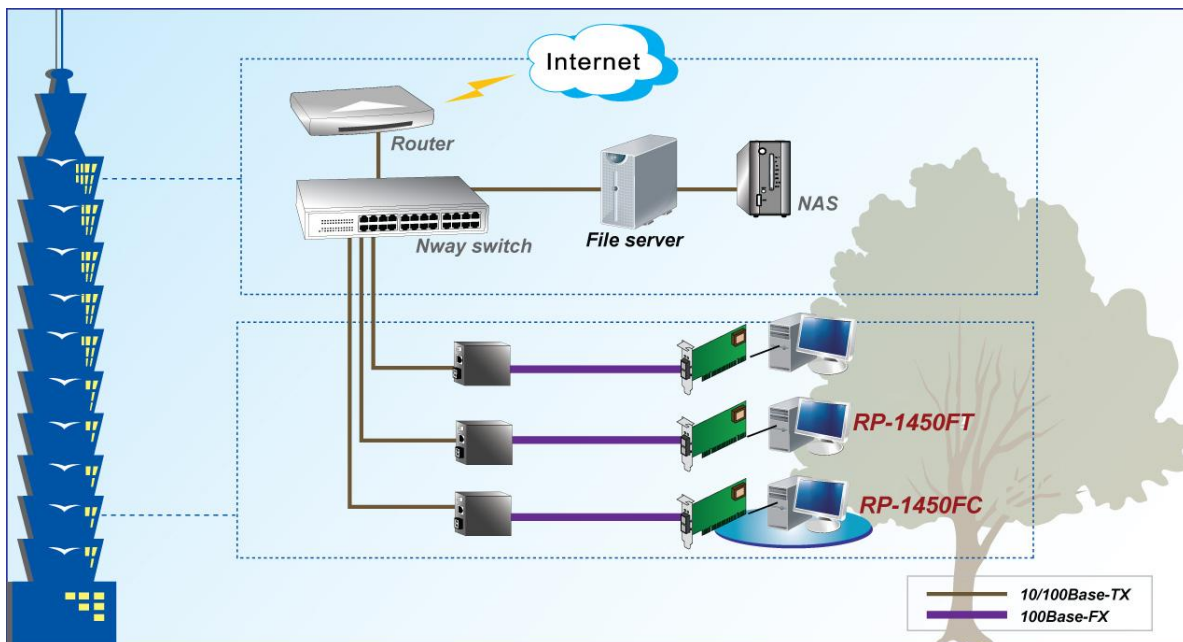
**Feature**

- Fiber Transceiver Supported:
  - SC: MM 2km
  - ST: MM 2km
- Fast Ethernet fiber connection for desktop PCs
- Full/Half Duplex
- 32-bit bus master data transfer with PC host
- Flow Control for fast, reliable data
- Support 802.1p/q VLAN Tag
- IP multicast address filter mechanism
- Wake-on-LAN (WOL) power management
- PCI 2.2 Plug-and-Play installation

## Specification

<b>Standards</b>	<ul style="list-style-type: none"> <li>• IEEE 802.3u Fast Ethernet 100Base-FX</li> </ul>
<b>LAN Drivers Supported</b>	<ul style="list-style-type: none"> <li>• NetWare Server 3.12, 4.1x, 5.x, 6.0</li> <li>• NetWare DOS Client ODI</li> <li>• Windows 95, 98, 4.0, 2000, XP,7</li> <li>• Linux</li> </ul>
<b>Boot Sever Supported</b>	<ul style="list-style-type: none"> <li>• Novell RPL Boot ROM</li> <li>• PXE Boot ROM</li> </ul>
<b>Data Transfer Mode / Speed</b>	<ul style="list-style-type: none"> <li>• PCI bus master</li> <li>• Full or Half Duplex mode</li> <li>• 100Mbps speed</li> </ul>
<b>LED Indicators</b>	<ul style="list-style-type: none"> <li>• Link/Activity, FDX on the bracket</li> </ul>
<b>Power Requirement</b>	<ul style="list-style-type: none"> <li>• 1.0A@+ 5V</li> </ul>
<b>Environment</b>	<ul style="list-style-type: none"> <li>• Operating Temperature: 0°C ~ 45°C</li> <li>• Storage Temperature: -20°C ~ 70°C</li> <li>• Humidity: 10% ~ 90% (Non-Condensing)</li> </ul>
<b>Dimension</b>	<ul style="list-style-type: none"> <li>• 140 * 120 mm</li> </ul>
<b>Certification</b>	<ul style="list-style-type: none"> <li>• FCC,FC</li> </ul>

## Specification



## Ordering information

RP-1450FC      100Base-FX PCI Ethernet Adapter, SC  
 RP-1450FT      100Base-FX PCI Ethernet Adapter, ST