

## **RP-2200EX**

### **100Base-FX PCI Express Adapter, MM / SC**



RP-2200EX is a Fiber Fast Ethernet to PCIe bus adapter that fully complies with all IEEE 802.3u and 100Base-FX standards. It provides up to 200Mbps full-duplex bandwidth capacity to support high-end servers. In addition, with advanced functions like VLAN filtering packet processing, the adapter provides enhanced performance, flexible configuration and secured networking for users in a standard-based environment. Two LED indicators (LINK/ACT and FDX) on the bracket will help users to oversee the board link, activities and full-duplex status.

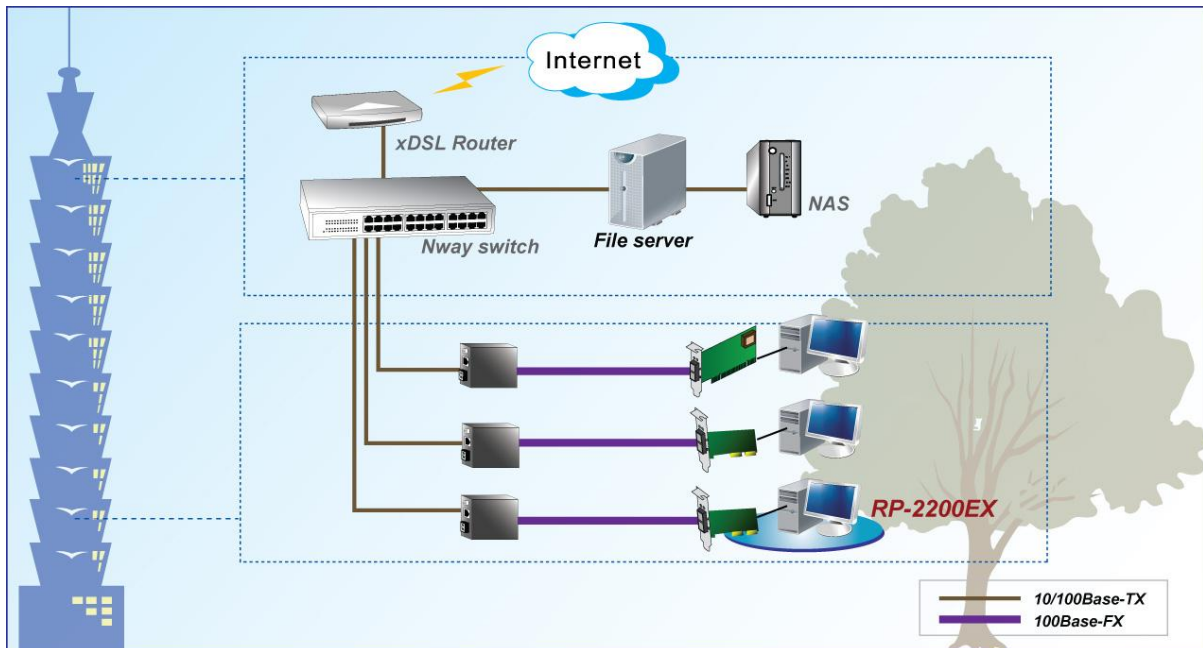
### **Feature**

- High bandwidth 100Mbps Network Speed
- Supports Full-Duplex Mode
- Supports IEEE 802.3x Full-Duplex Flow Control
- Supports PCI e x1 bus
- Compliant with PCIe Rev.1.1 Interface
- Supports Jumbo Frame
- Supports High Level VLAN Filtering Function
- Supports IP headers and TCP / UDP checksums offload
- Supports on-board screening of VLAN tagged Ethernet frames
- Supports Wake on LAN
- Supports ASF 2.0

## Specification

<b>Standards</b>	<ul style="list-style-type: none"> <li>• IEEE 802.3u Fast Ethernet 100Base-FX</li> <li>• IEEE 802.3x Full-Duplex Flow Control</li> <li>• IEEE 802.1Q VLANs</li> </ul>
<b>Connector</b>	<ul style="list-style-type: none"> <li>• 1310nm SC multi-mode</li> </ul>
<b>Cable</b>	<ul style="list-style-type: none"> <li>• 62.5/125, 50/125m</li> </ul>
<b>Data Transfer Rate</b>	<ul style="list-style-type: none"> <li>• Full duplex with flow control</li> <li>• 100Mbps speed</li> </ul>
<b>LED</b>	<ul style="list-style-type: none"> <li>• LINK (Green)</li> <li>• FDX (Amber)</li> </ul>
<b>Bus Slot</b>	<ul style="list-style-type: none"> <li>• PCIe 1.1 Compliant</li> </ul>
<b>Software Support</b>	<ul style="list-style-type: none"> <li>• Windows 2003 Server</li> <li>• Windows 2008 Server</li> <li>• Windows XP,</li> <li>• Vista</li> <li>• Windows 7</li> <li>• Novell Netware 5.x, 6.x</li> <li>• Linux</li> <li>• PXE &amp; RPL Boot ROM</li> </ul>
<b>Power Requirement</b>	<ul style="list-style-type: none"> <li>• Max. 2.4W, + 3.3VDC@ 0.7A</li> </ul>
<b>Environment</b>	<ul style="list-style-type: none"> <li>• Operating temperature : 0°C to 50°C</li> <li>• Operating Humidity:5% to 90% (Non-Condensing)</li> </ul>
<b>Dimension</b>	<ul style="list-style-type: none"> <li>• 108 * 68.5mm</li> </ul>
<b>Certification</b>	<ul style="list-style-type: none"> <li>• FCC, CE</li> </ul>

## Application



## Ordering information

**RP-2200EX**      100Base-FX PCI Express Adapter, MM / SC