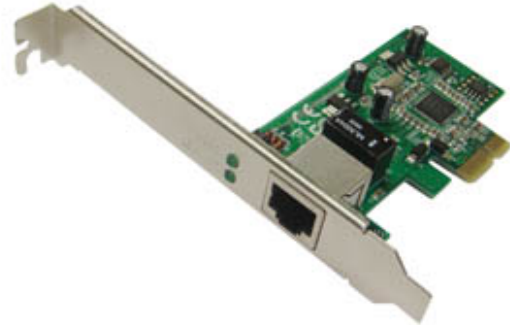




## RP-3200EX

### PCI Express Gigabit Ethernet Adapter



The RP-3200EX is a high performance Gigabit Ethernet adapter designed for PCI Express Bus, which has better performance than the current PCI interface.

With supporting connection speed up to 1000 Mbps, the RP-3200EX boost your networking throughput easily. It allows users to transfer high-bandwidth needed files faster and hence get a real efficiency improvement.

The RP-3200EX also support NWay auto-negotiation that detects the networking speed (10/100/1000 Mbps) and the duplex modes (full/half) automatically. Auto-MDI/MDI-X is also supported to alleviate the effort choosing crossover cables.

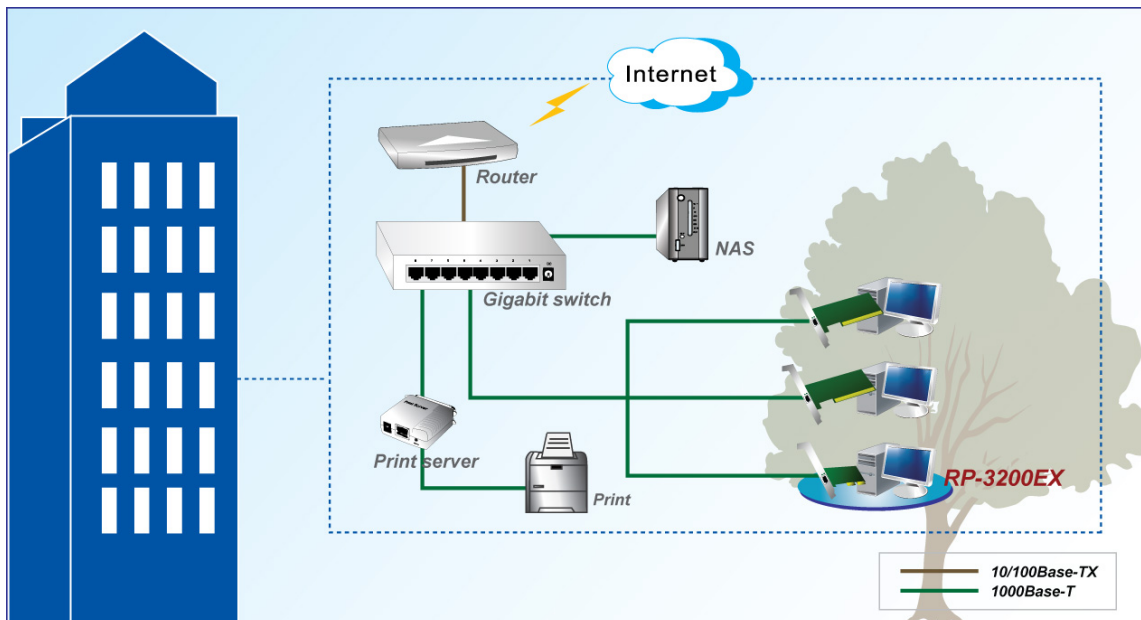
### Feature

- Comply with CSMA/CD protocol
- Supports with 10/100/1000 Mbps and Full/Half-Duplex auto negotiation
- Support Full Duplex flow control (IEEE 802.3x)
- Support Auto-MDI/ MDI-X auto crossover
- Support Wake-On-LAN
- ACPI Power Management, compliant to ACPI 2.0
- Integrated 128KB Frame Buffer Memory
- Support Windows 2000/X64/XP/VISTA/7/8 above

## Specification

<b>Standards</b>	<ul style="list-style-type: none"> <li>• IEEE 802.3ab: 1000BASE-T</li> <li>• IEEE 802.3u: 100BASE-TX</li> <li>• IEEE 802.3: 10BASE-T</li> <li>• IEEE 802.3z / IEEE 802.1p</li> </ul>
<b>Ports</b>	<ul style="list-style-type: none"> <li>• 1 * 10/100/1000 Mbps RJ-45 ports</li> <li>• Supports Auto MDI/MDI-X</li> </ul>
<b>BUS Type</b>	<ul style="list-style-type: none"> <li>• PCI Express 1.1</li> </ul>
<b>Network Media</b>	<ul style="list-style-type: none"> <li>• 1000BASE-T (4 pair Category 5 TP cable required)</li> <li>• 100BASE-TX (2 pair Category 5 TP cable required)</li> <li>• 10BASE-T (2 pair Category 3, 4, and 5 TP required)</li> <li>• Full-Duplex available in three modes</li> </ul>
<b>Memory</b>	<ul style="list-style-type: none"> <li>• Integrated 128KB Frame Buffer Memory</li> </ul>
<b>LED</b>	<ul style="list-style-type: none"> <li>• LNK/ACT; 1000Mbps</li> </ul>
<b>Driver support</b>	<ul style="list-style-type: none"> <li>• Windows 2000/X64/XP/VISTA/7/8 above</li> </ul>
<b>Environment</b>	<ul style="list-style-type: none"> <li>• Operating Temperature : 0°C~40°C</li> <li>• Operating Humidity : 10%~90% (Non-condensing)</li> </ul>
<b>Certification</b>	<ul style="list-style-type: none"> <li>• FCC, CE</li> </ul>

## Application



## Ordering information

**RP-3200EX** PCI Express Gigabit Ethernet Adapter

**RP-3200EXL** PCI Express Gigabit Ethernet Adapter, w/ Low Profile Bracket

**REPOTEC CO., LTD.**

3F, No.258, Lian Cheng Rd., Chung Ho City, Taipei Hsien 235, TAIWAN  
 TEL: 886-2-8227-1888 FAX: 886-2-8227-1818