



## RP-PE800A

### 8-P Fast Ethernet PoE+ Switch

The RP-PE800A is a 8-port Fast Ethernet PoE Switch. It is ideal for micro-segmenting large networks into smaller, connected subnets for improved performance, enabling the bandwidth demanding multimedia and imaging applications. Moreover, the 10/100Mbps auto-sensing ability provides an easy way to migrate 10Mbps to 100Mbps network.

This switch supports 802.3at PoE standard, which supplies power to connected devices via CAT 5 and above twisted cables. By integrating the data transmitting and power supply, it eliminates the effort constructing your network. You could easily connect a Wireless AP or a VoIP phone to this switch without arranging outlets for them. In addition, over current protection and circuit shorting protection are also supported to ensure the power supply safety.

The RP-PE800A supports plug-and-play without any software to configure and is also fully compliant with all kinds of network protocols. Moreover, the rich diagnostic LEDs on the front-panel provide the clear operating status of individual port and whole system.



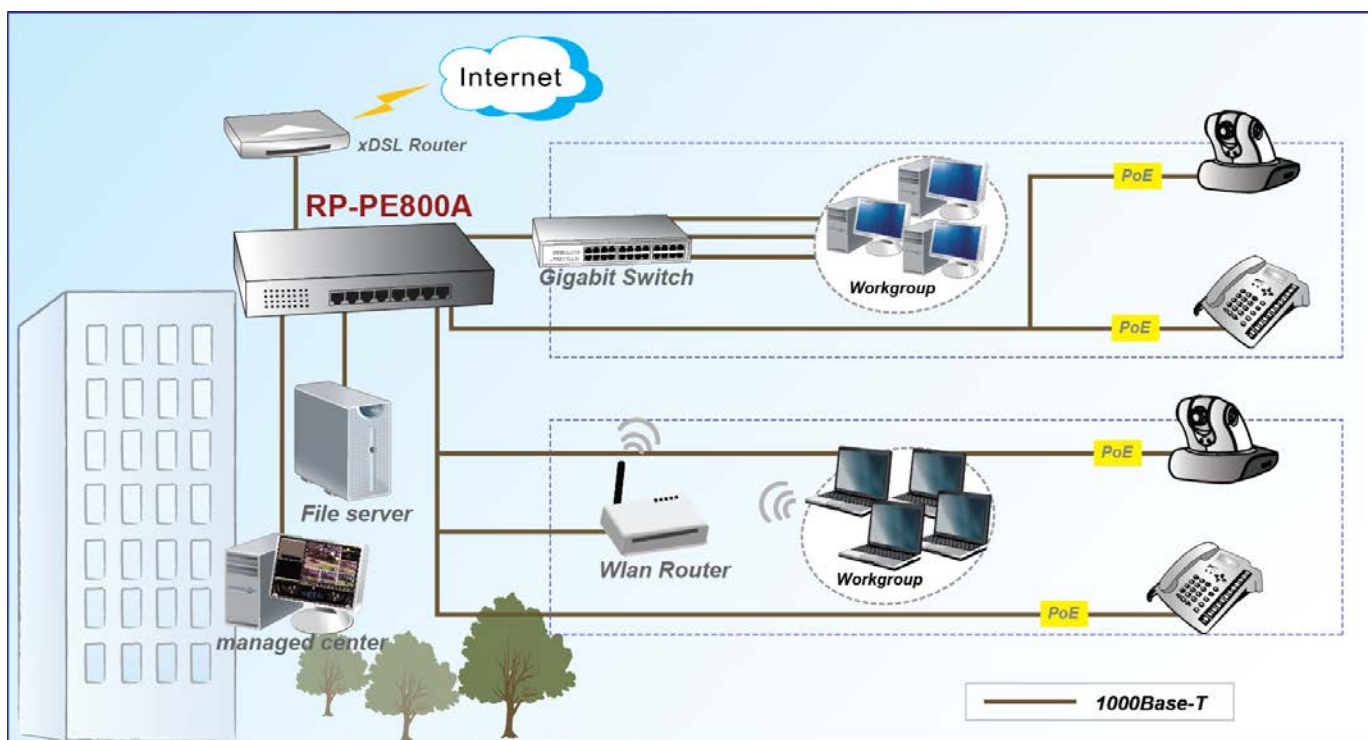
## Feature

- Comply with 10BASE-T specifications of the IEEE802.3 standard
- Comply with 100BASE-TX specifications of the IEEE802.3u standard
- Support NWay protocol for speed (10/100Mbps) and duplex mode (Half/Full) auto-detection
- Support MDI/MDI-X auto crossover
- Comply with IEEE 802.3at/af PoE standard
- Support 30W maximum per PoE port
- Support over current protection and circuit shorting protection
- Wire-speed packet filtering and forwarding rate
- Store-and-forward architecture filter fragment & CRC error packets
- Support extensive LED indicators for network diagnostics
- 11" Metal Case, support optional rack-mounting kits

# Specification

<b>Standards</b>	<ul style="list-style-type: none"> <li>• IEEE 802.3 10 BASE-T</li> <li>• IEEE 802.3u 100 BASE-TX</li> <li>• IEEE 802.3x Full-duplex and Flow Control</li> <li>• IEEE 802.3at/af Power Over Ethernet</li> </ul>
<b>Interface</b>	<ul style="list-style-type: none"> <li>• 8* 10/100Mbps RJ-45 ports</li> </ul>
<b>MAC Address</b>	<ul style="list-style-type: none"> <li>• 4K</li> </ul>
<b>Buffer Memory</b>	<ul style="list-style-type: none"> <li>• 1.625M bits</li> </ul>
<b>Filtering/Forwarding Rates</b>	<ul style="list-style-type: none"> <li>• 100Mbps port - 148,800pps</li> <li>• 10Mbps port - 14,880pps</li> </ul>
<b>Transmission Media</b>	<ul style="list-style-type: none"> <li>• 10BaseT Cat. 3, 4, 5 UTP/STP</li> <li>• 100BaseTX Cat. 5 UTP/STP</li> </ul>
<b>PoE specification</b>	<ul style="list-style-type: none"> <li>• PD classification identify</li> <li>• PoE over current protection</li> <li>• PoE circuit sorting protection</li> <li>• Power PIN Assignment 1/2(-), 3/6(+)</li> </ul>
<b>LED Indicators</b>	<ul style="list-style-type: none"> <li>• System: Power</li> <li>• Port: Link/Act, PoE Act</li> <li>• Per Port: Link / Act, PoE</li> <li>• PoE Port: Act / Status</li> </ul>
<b>PoE power budget</b>	<ul style="list-style-type: none"> <li>• Per PoE port 30 W</li> <li>• Total Power for PoE 150W Max</li> </ul>
<b>Power Supply</b>	<ul style="list-style-type: none"> <li>• Internal Power Adapter 100~240VAC, 50/60 Hz</li> </ul>
<b>Environment</b>	<ul style="list-style-type: none"> <li>• Operating temperature : 0°C to 50°C</li> <li>• Operating Humidity:10% to 90% (Non-Condensing)</li> </ul>
<b>Dimension</b>	<ul style="list-style-type: none"> <li>• 280 * 185 * 44mm</li> </ul>
<b>Certification</b>	<ul style="list-style-type: none"> <li>• FCC, CE, LVD</li> </ul>

# Application



## Ordering information

**RP-PE800A** 8-P Fast Ethernet PoE+ Switch (150W)