



RP-PG800E

8-P Gigabit Ethernet PoE+ Switch

RP-PG800E is a 8-Port Gigabit Power over Ethernet Switch, it provides users Gigabit Ethernet and power via CAT 5 and above twisted cables.

This PoE+ switch complies with IEEE 802.3af and 802.3at standards and supplies up to 30W per port, with a total PoE power budget of 120 W. Its auto-negotiate is between 10/100/1000 Mbps network speed and duplex. By integrating the data transmitting and power supply, it eliminates the toil of constructing your network. Users can easily connect a Wireless AP or a VoIP phone to this switch without arranging outlets for them.

In addition, it provides power to such as security camera/network webcam situated in a remote area where power connection is not possible. To ensure the power supply safety, this PoE+ switch also supports current protection and circuit shorting protection.

Moreover, front panel LEDs provides quick indication of connection speed and status.

Plug-and-play function without any software to configure and is also fully compliant with all kinds of network protocols.



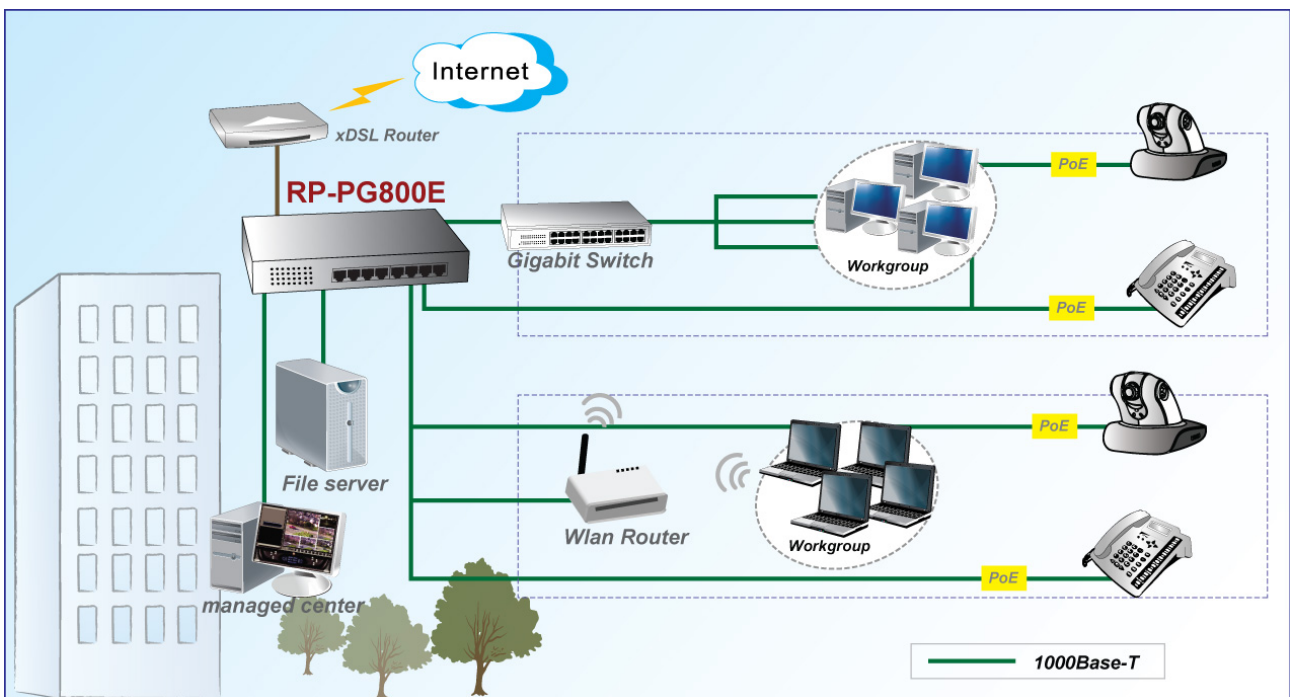
Feature

- Comply with IEEE 802.3 at/af PoE standard ,
- Support 30W maximum per PoE port
- Support over current protection and circuit shorting protection
- Support 10/100/1000Base-T applications
- Support MDI/MDI-X auto crossover
- Support extensive LED indicators for network diagnostics
- Wire-speed packet filtering and forwarding rate
- Store-and-forward architecture filter fragment & CRC error packets
- Compact design

Specification

Standards	<ul style="list-style-type: none"> • IEEE 802.3 10 BASE-T • IEEE 802.3u 100 BASE-TX • IEEE 802.3ab 1000Base-T • IEEE 802.3at/af Power Over Ethernet
Interface	<ul style="list-style-type: none"> • 8* 10/100/1000Mbps RJ-45 ports
Filtering/Forwarding Rates	<ul style="list-style-type: none"> • 1000Mbps port - 1,488,000pps • 100Mbps port - 148,800pps • 10Mbps port - 14,880pps
Transmission Media	<ul style="list-style-type: none"> • 10BaseT Cat. 3, 4, 5 UTP/STP • 100BaseTX Cat. 5 UTP/STP • 1000BaseTX Cat. 5E/6/7 UTP/STP
PoE Specification	<ul style="list-style-type: none"> • PD classification identify • PoE over current protection • PoE circuit sorting protection • PoE power on RJ-45 pin 1,2 for power + / pin 3,6 for power -
LED Indicators	<ul style="list-style-type: none"> • Power, 10/100,1000, Link/Act, PoE (Green)
PoE Power Budget	<ul style="list-style-type: none"> • Per PoE port 30 W • Max. 120W for RP-PG800E
Power Supply	<ul style="list-style-type: none"> • External Power Adapter 100~240VAC, 50/60 Hz, 56V
Environment	<ul style="list-style-type: none"> • Operating temperature : 0°C to 40°C • Operating Humidity:10% to 90% (Non-Condensing)
Dimension	<ul style="list-style-type: none"> • 188 * 119 * 39mm
Certification	<ul style="list-style-type: none"> • FCC, CE, LVD

Application



Ordering information

RP-PG800E 8-P Gigabit Ethernet PoE+ Switch (120W)