

## RP-1705M | RP-1708M 5-P/8-P Fast Ethernet Switch

The devices provide a network with five or eight new and independent bandwidths speed Nway ports with TP.

All of the ports support automatic MDI/MDIX crossover and Auto-negotiation function.

Besides, these ports detect the network speed and auto-negotiate between 10BASE-T and 100BASE-TX, as well as between full and half-duplex.

The devices is a Plug-n-Play Switch, each port can be plugged directly to a server, router, or switch using regular straight-through twisted-pair Ethernet cables, so no confusing configuration is needed.

The Switch offers user a friendly design with LED indicators per port which is located on top of the panel, and TP ports neatly placed along the front panel. To instantly add five/eight new bandwidths, or to upgrade the performance of any network.



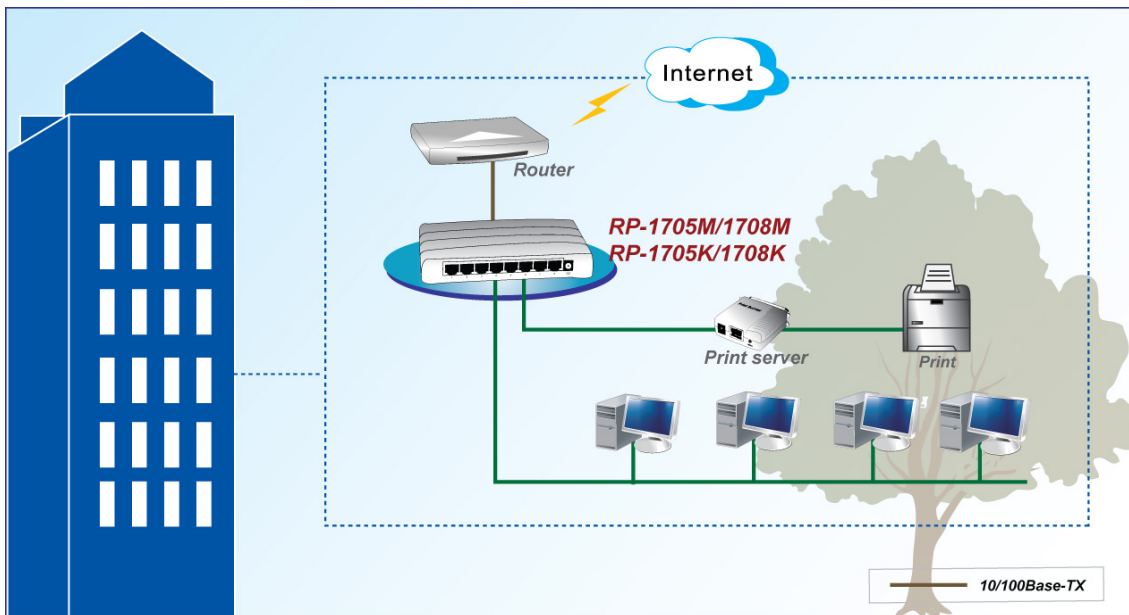
### Feature

- 5/8 ports Switched ports with Auto-negotiation function
- Full wire speed "Store-and-Forward" technology instantly eliminates bad packets
- Filtering/Forwarding Rate: 148,800 packets/sec. per port Max
- IEEE 802.3x Flow Control support for Full Duplex operation
- Back-Pressure support for Half Duplex operation
- IEEE 802.3u and 802.3 standards comply
- Plug-n-Play with easy to read diagnostic LEDs
- 5/8 ports Auto MDI-X detects and corrects crossover cables
- Support Green Ethernet (Link-On Cable Length Power Saving and Link-Down Power Saving)
- Supports IEEE802.3az Energy Efficient Ethernet

## Specification

<b>Standards</b>	<ul style="list-style-type: none"><li>• 100Base-TX, IEEE 802.3u</li><li>• 10Base-T, IEEE 802.3</li><li>• IEEE802.3az EEE</li></ul>
<b>Interface</b>	<ul style="list-style-type: none"><li>• 5 x 100Base-TX/10Base-T</li><li>• 8 x 100Base-TX/10Base-T</li></ul>
<b>MAC Table</b>	<ul style="list-style-type: none"><li>• 2K</li></ul>
<b>Jumbo Frame</b>	<ul style="list-style-type: none"><li>• 2K bytes</li></ul>
<b>Media Support</b>	<ul style="list-style-type: none"><li>• 100Base-TX: Cat.5 TP</li><li>• 10Base-T: Cat.3, 4 or 5 TP</li></ul>
<b>Data Transfer Rate</b>	<ul style="list-style-type: none"><li>• 100Base-TX/10Base-T: 200/100/20/10Mbps, via Auto-Negotiation</li></ul>
<b>Forwarding / Filtering Rate</b>	<ul style="list-style-type: none"><li>• 148810 packets/second per port @ 100Mbps, Max</li><li>• 14880 packets/second per port @ 10Mbps, Max</li></ul>
<b>Duplex Modes</b>	<ul style="list-style-type: none"><li>• All ports support Half Duplex and Full Duplex operation</li></ul>
<b>Auto MDIX</b>	<ul style="list-style-type: none"><li>• All ports support Auto MDI-X which can detect and corrects crossover cables</li></ul>
<b>LED Indicators</b>	<ul style="list-style-type: none"><li>• One for Power On/Off</li><li>• Per port for Link/Activity</li></ul>
<b>Cabinet</b>	<ul style="list-style-type: none"><li>• Metal case</li></ul>
<b>Power consumption</b>	<ul style="list-style-type: none"><li>• 2.1W (5P)</li><li>• 2.6W (8P)</li></ul>
<b>Power Supply</b>	<ul style="list-style-type: none"><li>• External Power Adapter DC 9V</li></ul>
<b>Environment</b>	<ul style="list-style-type: none"><li>• Operating Temperature: 0°C~45°C</li><li>• Operating Humidity: 10%~90% (Non-Condensing)</li></ul>
<b>Dimension</b>	<ul style="list-style-type: none"><li>• 139 * 66 * 27mm</li></ul>
<b>Certification</b>	<ul style="list-style-type: none"><li>• FCC, CE</li></ul>

## Specification



## Ordering information

<b>RP- 1705M</b>	5-P Fast Ethernet Switch (Metal case)
<b>RP- 1708M</b>	8-P Fast Ethernet Switch (Metal case)