

>> RP-1716DR2**>> RP-1724DR****16-P/24-P Fast Ethernet Switch**

The device is designed to enhance workgroup performance which supports 10/100Mbps Auto-Negotiation for optimal speed detection through RJ-45 copper interfaces. It not only supports Store-and-Forward forwarding scheme to ensure low latency and high data integrity but also automatically identify and determine the correct transmission speed as well as half / full duplex mode. Plug & play and all kinds of network protocols compilation which including runt and CRC error packets make the installation & network management easily and fast. It is ideal for micro-segmenting large networks into smaller, connected subnets for improved performance, enabling the bandwidth demanding multimedia and imaging applications.

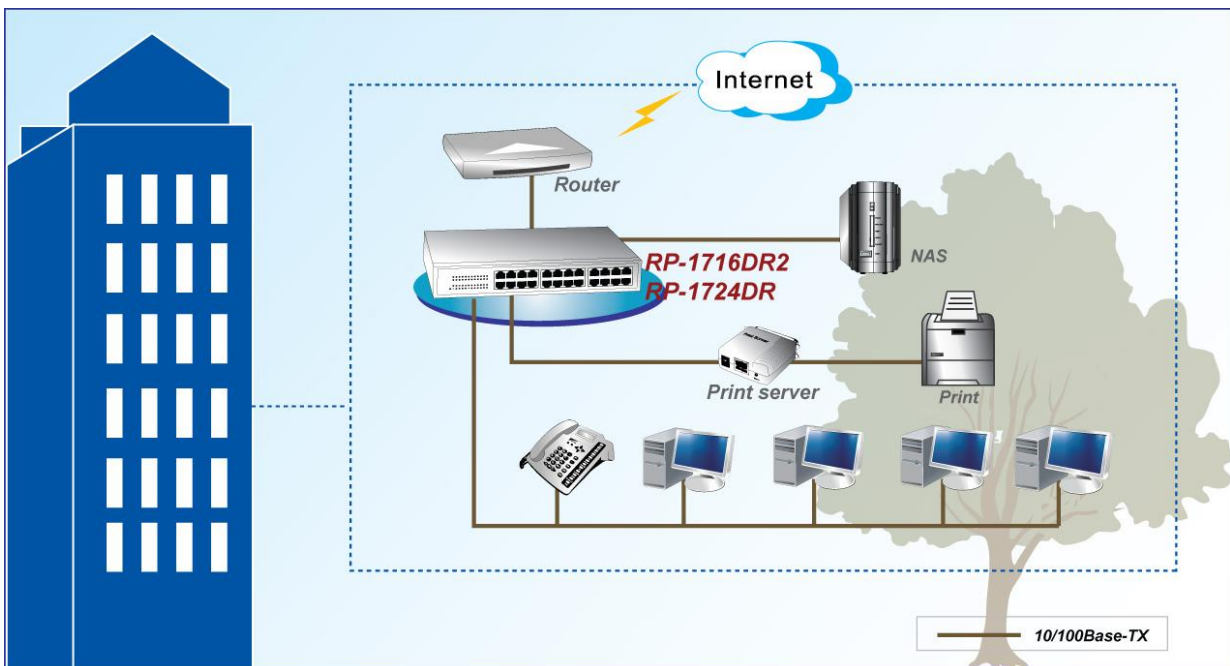
Feature

- Comply with 10Base-T specifications of the IEEE 802.3 standard
- Comply with 100Base-TX specifications of the IEEE 802.3u standard
- RJ-45 ports for 100Base-TX and 10Base-T connectivity
- Support Nway protocol for speed (10/100Mbps) and Duplex mode (Half/Full) auto-detection
- Support Auto MDI/MDI-X crossover
- Support Full and Half Duplex operation on all ports
- Support back-pressure (Half Duplex) and Flow Control (IEEE 802.3x)
- Wire-speed packet filtering and forwarding rate
- Store-and-forward architecture filters fragment & CRC error packets

Specification

Standards	<ul style="list-style-type: none"> • IEEE 802.3, IEEE 802.3u and IEEE 802.3x
Media Support	<ul style="list-style-type: none"> • 10Base-T: Cat.3, 4 or 5 TP • 100Base-TX: Cat.5 TP
Data Transfer Rate	<ul style="list-style-type: none"> • 200/100/20/10Mbps
Forwarding/Filtering Rate	<ul style="list-style-type: none"> • 10Mbps: 14,880pps/14,880pps • 100Mbps: 148,800pps/148,800pps
MAC Address	<ul style="list-style-type: none"> • Supports up to 8K MAC address
Buffer Memory	<ul style="list-style-type: none"> • Embedded 160Kbytes packet buffer
Duplex Modes	<ul style="list-style-type: none"> • Auto-Negotiation
Crossover	<ul style="list-style-type: none"> • Auto MDI/MDIX Crossover function for each port
LED Indicators	<ul style="list-style-type: none"> • System: Power • Port: Link/Activity, 10/100Mbps
Power Supply	<ul style="list-style-type: none"> • Internal power supply 100~240VAC
Environment	<ul style="list-style-type: none"> • Operating Temperature: 0°C ~ 45°C • Operating Humidity: 10%~90% (Non-Condensing)
Dimension	<ul style="list-style-type: none"> • 280 * 161* 44 m
Certification	<ul style="list-style-type: none"> • FCC, CE

Specification



Ordering information

- RP-1716DR2** 16-P Fast Ethernet Switch (Desk Top)
- RP-1724DR** 24-P Fast Ethernet Switch (Desk Top)