

>> RP-SW16P**>> RP-SW24P****16-P/24-P Fast Ethernet Switch**

The Switch are designed to allow simultaneous transmission of multiple packets via an internal high-speed data channel. It means that it can part a network more efficiently than bridges or routers in most environments. This 16/24 port Ethernet Switch is a highly reliable network Switch and is the ideal device for bridging Ethernet to Fast Ethernet workgroups or networks. Simple and cost-effecient, the 16/24 port Switch Ethernet supports IEEE 802.3 10Base-T Ethernet and IEEE 802.3u 100Base-TX Fast Ethernet. The 16/24 port Switch is therefore being recognized as one of the most important building blocks for today's networking technology.

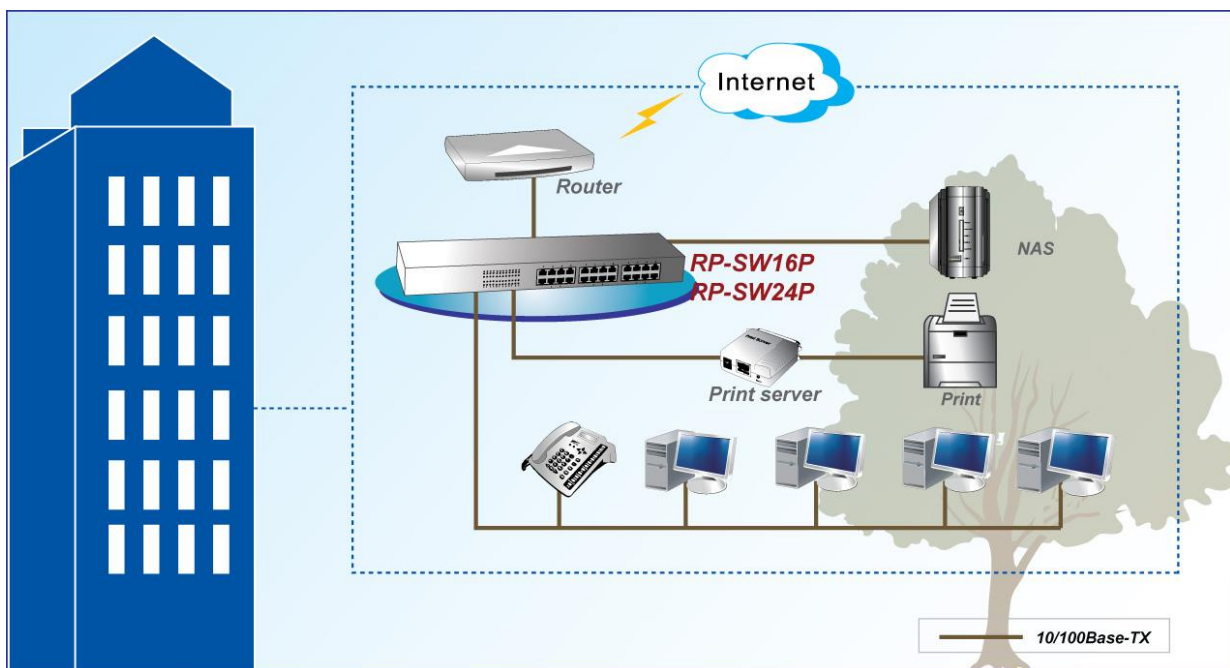
Feature

- Comply with 10Base-T specifications of the IEEE 802.3 standard
- Comply with 100Base-TX specifications of the IEEE 802.3u standard
- RJ45 ports for 100Base-TX and 10Base-T connectivity
- Support Nway protocol for speed (10/100Mbps) and Duplex mode (Half/Full) auto-detection
- Support Auto MDI/MDI-X crossover
- Support Full and Half Duplex operation on all ports
- Support back-pressure (Half Duplex) and Flow Control (IEEE 802.3x)
- Wire-speed packet filtering and forwarding rate
- Store-and-forward architecture filters fragment & CRC error packets

Specification

Standards	<ul style="list-style-type: none"> • IEEE 802.3, IEEE 802.3u and IEEE 802.3x
Media Support	<ul style="list-style-type: none"> • 10Base-T: Cat.3, 4 or 5 TP • 100Base-TX: Cat.5 TP
Data Transfer Rate	<ul style="list-style-type: none"> • 200/100/20/10Mbps
Forwarding/Filtering Rate	<ul style="list-style-type: none"> • 10Mbps: 14,880pps/14,880pps • 100Mbps: 148,800pps/148,800pps
MAC Address	<ul style="list-style-type: none"> • Supports up to 8K MAC address
Buffer Memory	<ul style="list-style-type: none"> • Embedded 160Kbytes packet buffer
Duplex Modes	<ul style="list-style-type: none"> • Auto-Negotiation
Crossover	<ul style="list-style-type: none"> • Auto MDI/MDIX Crossover function for each port
LED Indicators	<ul style="list-style-type: none"> • System: Power • Port: Link/Activity, 10/100Mbps
Power Supply	<ul style="list-style-type: none"> • Internal power supply 100~240VAC
Environment	<ul style="list-style-type: none"> • Operating Temperature: 0°C ~ 45°C • Operating Humidity: 10%~90% (Non-Condensing)
Dimension	<ul style="list-style-type: none"> • 440*200*44 mm
Certification	<ul style="list-style-type: none"> • FCC, CE

Specification



Ordering information

RP-SW16P	16-P Nway Ethernet Switch
RP-SW24P	24-P Nway Ethernet Switch